

DATASHEET

MYSM1 Rabbit Polyclonal Antibody

CAT. NO. APA16239

KEY FEATURES

Target	MYSM1	Source / Host	Rabbit
Reactivity	Human, Mouse, Rat	Clonality	Polyclonal
Applications	WB	Conjugation	Unconjugated
Form / Buffer	Liquid in 0.42% Potassium phosphate, 0.87% Sodium chloride, pH 7.3, 30% glycerol, and 0.01% sodium azide.		Storage at-20°C

BACKGROUND

Metalloprotease with deubiquitinase activity that plays important regulator roles in hematopoietic stem cell function, blood cell production and immune response . Participates in the normal programming of B-cell responses to antigen after the maturation process . Within the cytoplasm, plays critical roles in the repression of innate immunity and autoimmunity . Removes 'Lys-63'-linked polyubiquitins from TRAF3 and TRAF6 complexes . Attenuates NOD2-mediated inflammation and tissue injury by promoting 'Lys-63'-linked deubiquitination of RIPK2 component . Suppresses the CGAS-STING1 signaling pathway by cleaving STING1 'Lys-63'-linked ubiquitin chains .

APPLICATION

To ensure optimal assay performance, AREX recommends conducting reagent titration tailored to each testing system for optimal detection results.

WB	1:500 - 1:2000
----	----------------

*Results are sample-specific. Please refer to your local assay conditions and test parameters for reference.

PRODUCT OVERVIEW

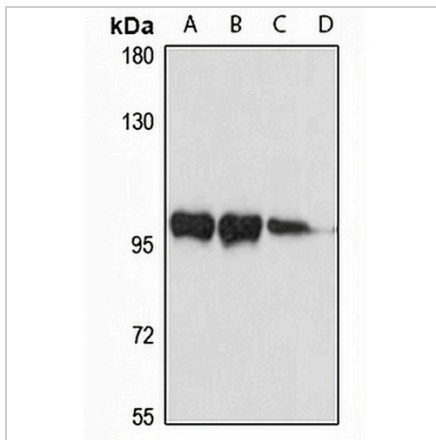
Description	Rabbit polyclonal antibody to MYSM1
Specificity	Recognizes endogenous levels of MYSM1 protein
Antibody Type	Primary antibody
Immunogen	KLH-conjugated synthetic peptide of human MYSM1. The exact sequence is proprietary.
Purification	The antibody was purified by immunogen affinity chromatography.
Molecular Weight	Predicted: 26; Observed: 105 kD
Form/Buffer	Liquid in 0.42% Potassium phosphate, 0.87% Sodium chloride, pH 7.3, 30% glycerol, and 0.01% sodium azide.
Alternative Names	KIAA1915; Histone H2A deubiquitinase MYSM1; 2A-DUB; Myb-like SWIRM and MPN domain-containing protein 1
Gene Symbol	MYSM1
Entrez Gene	114803(Human); 320713(Mouse)
SwissProt	Q5VVJ2(Human); Q69Z66(Mouse)

*AREX continuously optimizes our products. Webpage content may not reflect the latest updates. For inquiries, please contact info@arexbio.com or your local distributor.

*Clone Number, Reactivity, Source/Host and Clonality can be found in the product name and Key Features section above.

DATASHEET**MYSM1 Rabbit Polyclonal Antibody**

CAT. NO. APA16239

DATA

Western blot analysis of MYSM1 expression in HepG2 (A), HeLa (B), mouse brain (C), rat brain (D) whole cell lysates. (Predicted band size: 26; 66; 95 kD; Observed band size: 105 kD)

STORAGE

Store at 4°C short term. For long term storage, store at -20°C, avoiding freeze/thaw cycles.

NOTE

For Research Use Only. Not for diagnostic, therapeutics, prophylactic or in vivo use.