

DATASHEET

NAB1 Rabbit Polyclonal Antibody

CAT. NO. APA16241

KEY FEATURES

Target	NAB1	Source / Host	Rabbit
Reactivity	Human, Mouse, Rat	Clonality	Polyclonal
Applications	WB	Conjugation	Unconjugated
Form / Buffer	Liquid in 0.42% Potassium phosphate, 0.87% Sodium chloride, pH 7.3, 30% glycerol, and 0.01% sodium azide.		Storage at -20°C

BACKGROUND

Acts as a transcriptional repressor for zinc finger transcription factors EGR1 and EGR2.

APPLICATION

To ensure optimal assay performance, AREX recommends conducting reagent titration tailored to each testing system for optimal detection results.

WB	1:500 - 1:2000
----	----------------

*Results are sample-specific. Please refer to your local assay conditions and test parameters for reference.

PRODUCT OVERVIEW

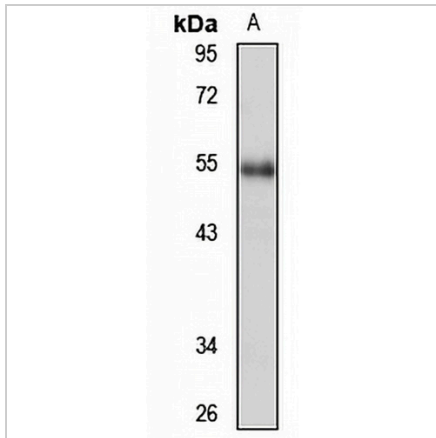
Description	Rabbit polyclonal antibody to NAB1
Specificity	Recognizes endogenous levels of NAB1 protein
Antibody Type	Primary antibody
Immunogen	Recombinant fusion protein of human NAB1. The exact sequence is proprietary.
Purification	The antibody was purified by immunogen affinity chromatography.
Molecular Weight	Predicted: 51; Observed: 54 kD
Form/Buffer	Liquid in 0.42% Potassium phosphate, 0.87% Sodium chloride, pH 7.3, 30% glycerol, and 0.01% sodium azide.
Alternative Names	NGFI-A-binding protein 1; EGR-1-binding protein 1; Transcriptional regulatory protein p54
Gene Symbol	NAB1
Entrez Gene	4664(Human); 17936(Mouse); 64824(Rat)
SwissProt	Q13506(Human); Q61122(Mouse); Q62722(Rat)

*AREX continuously optimizes our products. Webpage content may not reflect the latest updates. For inquiries, please contact info@arexbio.com or your local distributor.

*Clone Number, Reactivity, Source/Host and Clonality can be found in the product name and Key Features section above.

DATASHEET**NAB1 Rabbit Polyclonal Antibody**

CAT. NO. APA16241

DATA

Western blot analysis of NAB1 expression in HeLa (A) whole cell lysates. (Predicted band size: 51; 54 kD; Observed band size: 54 kD)

STORAGE

Store at 4°C short term. For long term storage, store at -20°C, avoiding freeze/thaw cycles.

NOTE

For Research Use Only. Not for diagnostic, therapeutics, prophylactic or in vivo use.