

DATASHEET

NAP1L2 Rabbit Polyclonal Antibody

CAT. NO. APA16247

KEY FEATURES

Target	NAP1L2	Source / Host	Rabbit
Reactivity	Human, Mouse, Rat	Clonality	Polyclonal
Applications	WB	Conjugation	Unconjugated
Form / Buffer	Liquid in 0.42% Potassium phosphate, 0.87% Sodium chloride, pH 7.3, 30% glycerol, and 0.01% sodium azide.		Storage at -20°C

BACKGROUND

Histone chaperone . Plays a role in the epigenetic regulation of gene expression during cellular differentiation, by regulating the acetylation status of histone H3 and therefore chromatin accessibility . Plays a role in the differentiation of neuronal cells . Increased activity during aging may suppress osteogenic differentiation of bone marrow mesenchymal stem cells (BMSCs) and promote their senescence; recruits SIRT1 to deacetylate histone H3 'Lys-14' at the promoter of osteogenic genes .

APPLICATION

To ensure optimal assay performance, AREX recommends conducting reagent titration tailored to each testing system for optimal detection results.

WB	1:500 - 1:2000
----	----------------

*Results are sample-specific. Please refer to your local assay conditions and test parameters for reference.

PRODUCT OVERVIEW

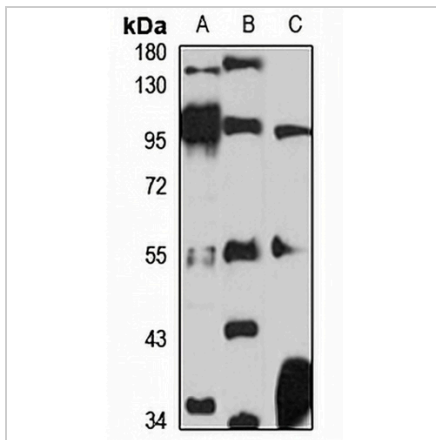
Description	Rabbit polyclonal antibody to NAP1L2
Specificity	Recognizes endogenous levels of NAP1L2 protein
Antibody Type	Primary antibody
Immunogen	Recombinant fusion protein of human NAP1L2. The exact sequence is proprietary.
Purification	The antibody was purified by immunogen affinity chromatography.
Molecular Weight	Predicted: 37; Observed: 55 kD
Form/Buffer	Liquid in 0.42% Potassium phosphate, 0.87% Sodium chloride, pH 7.3, 30% glycerol, and 0.01% sodium azide.
Alternative Names	BPX; Nucleosome assembly protein 1-like 2; Brain-specific protein X-linked
Gene Symbol	NAP1L2
Entrez Gene	4674(Human); 17954(Mouse)
SwissProt	Q9ULW6(Human); P51860(Mouse)

*AREX continuously optimizes our products. Webpage content may not reflect the latest updates. For inquiries, please contact info@arexbio.com or your local distributor.

*Clone Number, Reactivity, Source/Host and Clonality can be found in the product name and Key Features section above.

DATASHEET**NAP1L2 Rabbit Polyclonal Antibody**

CAT. NO. APA16247

DATA

Western blot analysis of NAP1L2 expression in Jurkat (A), mouse kidney (B), rat brain (C) whole cell lysates. (Predicted band size: 37; 52 kD; Observed band size: 55 kD)

STORAGE

Store at 4°C short term. For long term storage, store at -20°C, avoiding freeze/thaw cycles.

NOTE

For Research Use Only. Not for diagnostic, therapeutics, prophylactic or in vivo use.