

## DATASHEET

# NAPRT1 Rabbit Polyclonal Antibody

CAT. NO. APA16248

### KEY FEATURES

Target	NAPRT1	Source / Host	Rabbit
Reactivity	Human, Mouse, Rat	Clonality	Polyclonal
Applications	WB	Conjugation	Unconjugated
Form / Buffer	Liquid in 0.42% Potassium phosphate, 0.87% Sodium chloride, pH 7.3, 30% glycerol, and 0.01% sodium azide.		Storage at-20°C

### BACKGROUND

Catalyzes the first step in the biosynthesis of NAD from nicotinic acid, the ATP-dependent synthesis of beta-nicotinate D-ribonucleotide from nicotinate and 5-phospho-D-ribose 1-phosphate . Helps prevent cellular oxidative stress via its role in NAD biosynthesis .

### APPLICATION

To ensure optimal assay performance, AREX recommends conducting reagent titration tailored to each testing system for optimal detection results.

WB	1:500 - 1:2000
----	----------------

\*Results are sample-specific. Please refer to your local assay conditions and test parameters for reference.

### PRODUCT OVERVIEW

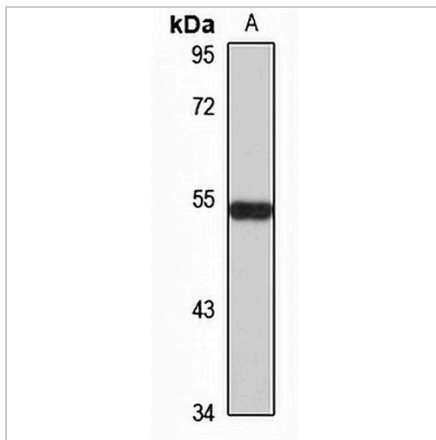
Description	Rabbit polyclonal antibody to NAPRT1
Specificity	Recognizes endogenous levels of NAPRT1 protein
Antibody Type	Primary antibody
Immunogen	Recombinant fusion protein of human NAPRT1. The exact sequence is proprietary.
Purification	The antibody was purified by immunogen affinity chromatography.
Molecular Weight	Predicted: 56; Observed: 55 kD
Form/Buffer	Liquid in 0.42% Potassium phosphate, 0.87% Sodium chloride, pH 7.3, 30% glycerol, and 0.01% sodium azide.
Alternative Names	FHIP; Nicotinate phosphoribosyltransferase; NAPRTase; FHA-HIT-interacting protein; Nicotinate phosphoribosyltransferase domain-containing protein 1
Gene Symbol	NAPRT1
Entrez Gene	93100(Human); 223646(Mouse); 315085(Rat)
SwissProt	Q6XQN6(Human); Q8CC86(Mouse); Q6XQN1(Rat)

\*AREX continuously optimizes our products. Webpage content may not reflect the latest updates. For inquiries, please contact [info@arexbio.com](mailto:info@arexbio.com) or your local distributor.

\*Clone Number, Reactivity, Source/Host and Clonality can be found in the product name and Key Features section above.

**DATASHEET****NAPRT1 Rabbit Polyclonal Antibody**

CAT. NO. APA16248

**DATA**

Western blot analysis of NAPRT1 expression in HT29 (A) whole cell lysates. (Predicted band size: 56; 57; 60 kD; Observed band size: 55 kD)

**STORAGE**

Store at 4°C short term. For long term storage, store at -20°C, avoiding freeze/thaw cycles.

**NOTE**

For Research Use Only. Not for diagnostic, therapeutics, prophylactic or in vivo use.