

DATASHEET

NAT-2 Rabbit Polyclonal Antibody

CAT. NO. APA16250

KEY FEATURES

Target	NAT-2	Source / Host	Rabbit
Reactivity	Human, Mouse, Rat	Clonality	Polyclonal
Applications	WB, IHC	Conjugation	Unconjugated
Form / Buffer	Liquid in 0.42% Potassium phosphate, 0.87% Sodium chloride, pH 7.3, 30% glycerol, and 0.01% sodium azide.		Storage at -20°C

BACKGROUND

Catalyzes the N- or O-acetylation of various arylamine and heterocyclic amine substrates . Participates in the detoxification of a plethora of hydrazine and arylamine drugs, and is able to bioactivate several known carcinogens.

APPLICATION

To ensure optimal assay performance, AREX recommends conducting reagent titration tailored to each testing system for optimal detection results.

WB	1:500 - 1:1000
IHC	1:50 - 1:200

*Results are sample-specific. Please refer to your local assay conditions and test parameters for reference.

PRODUCT OVERVIEW

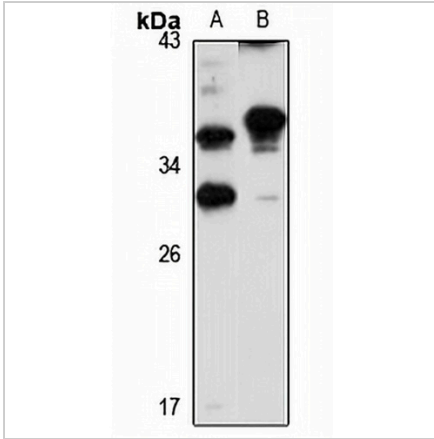
Description	Rabbit polyclonal antibody to NAT-2
Specificity	Recognizes endogenous levels of NAT-2 protein
Antibody Type	Primary antibody
Immunogen	Recombinant fusion protein of human NAT-2. The exact sequence is proprietary.
Purification	The antibody was purified by immunogen affinity chromatography.
Molecular Weight	Predicted: 33 kD; Observed: 36 kD
Form/Buffer	Liquid in 0.42% Potassium phosphate, 0.87% Sodium chloride, pH 7.3, 30% glycerol, and 0.01% sodium azide.
Alternative Names	AAC2; Arylamine N-acetyltransferase 2; Arylamide acetylase 2; N-acetyltransferase type 2; NAT-2; Polymorphic arylamine N-acetyltransferase; PNAT
Gene Symbol	NAT2
Entrez Gene	10(Human); 17961(Mouse); 116632(Rat)
SwissProt	P11245(Human); P50295(Mouse); P50298(Rat)

*AREX continuously optimizes our products. Webpage content may not reflect the latest updates. For inquiries, please contact info@arexbio.com or your local distributor.

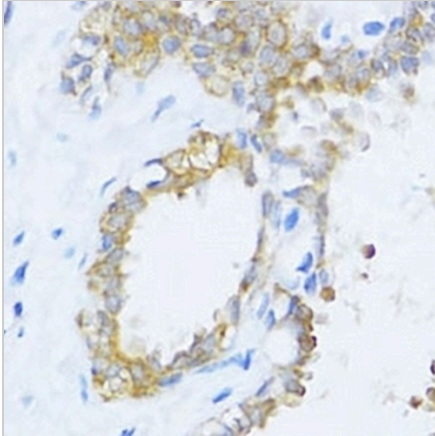
*Clone Number, Reactivity, Source/Host and Clonality can be found in the product name and Key Features section above.

DATASHEET**NAT-2 Rabbit Polyclonal Antibody**

CAT. NO. APA16250

DATA

Western blot analysis of NAT-2 expression in HEK293T (A), mouse kidney (B) whole cell lysates. (Predicted band size: 33 kD; Observed band size: 36 kD)



Immunohistochemical analysis of NAT-2 staining in human breast formalin fixed paraffin embedded tissue section. The section was pre-treated using heat mediated antigen retrieval with sodium citrate buffer (pH 6.0). The section was then incubated with the antibody at room temperature and detected using an HRP conjugated compact polymer system. DAB was used as the chromogen. The section was then counterstained with haematoxylin and mounted with DPX.

STORAGE

Store at 4°C short term. For long term storage, store at -20°C, avoiding freeze/thaw cycles.

NOTE

For Research Use Only. Not for diagnostic, therapeutics, prophylactic or in vivo use.