

## DATASHEET

# NBEAL2 Rabbit Polyclonal Antibody

CAT. NO. APA16251

### KEY FEATURES

Target	NBEAL2	Source / Host	Rabbit
Reactivity	Human	Clonality	Polyclonal
Applications	WB	Conjugation	Unconjugated
Form / Buffer	Liquid in 0.42% Potassium phosphate, 0.87% Sodium chloride, pH 7.3, 30% glycerol, and 0.01% sodium azide.		Storage at -20°C

### BACKGROUND

Probably involved in thrombopoiesis. Plays a role in the development or secretion of alpha-granules, that contain several growth factors important for platelet biogenesis.

### APPLICATION

To ensure optimal assay performance, AREX recommends conducting reagent titration tailored to each testing system for optimal detection results.

WB	1:500 - 1:2000
----	----------------

\*Results are sample-specific. Please refer to your local assay conditions and test parameters for reference.

### PRODUCT OVERVIEW

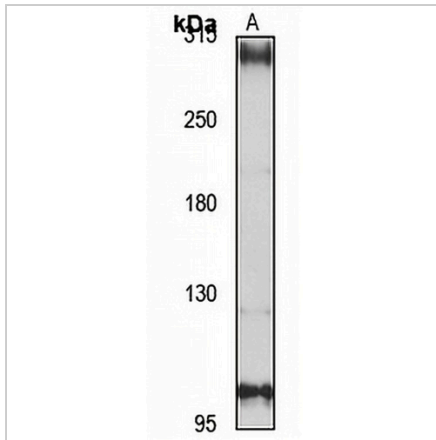
Description	Rabbit polyclonal antibody to NBEAL2
Specificity	Recognizes endogenous levels of NBEAL2 protein
Antibody Type	Primary antibody
Immunogen	Recombinant fusion protein of human NBEAL2. The exact sequence is proprietary.
Purification	The antibody was purified by immunogen affinity chromatography.
Molecular Weight	Predicted: 282; Observed: 302 kD
Form/Buffer	Liquid in 0.42% Potassium phosphate, 0.87% Sodium chloride, pH 7.3, 30% glycerol, and 0.01% sodium azide.
Alternative Names	KIAA0540; Neurobeachin-like protein 2
Gene Symbol	NBEAL2
Entrez Gene	23218(Human)
SwissProt	Q6ZNJ1(Human)

\*AREX continuously optimizes our products. Webpage content may not reflect the latest updates. For inquiries, please contact [info@arexbio.com](mailto:info@arexbio.com) or your local distributor.

\*Clone Number, Reactivity, Source/Host and Clonality can be found in the product name and Key Features section above.

**DATASHEET****NBEAL2 Rabbit Polyclonal Antibody**

CAT. NO. APA16251

**DATA**

Western blot analysis of NBEAL2 expression in HeLa (A) whole cell lysates. (Predicted band size: 282; 299; 302 kD; Observed band size: 302 kD)

**STORAGE**

Store at 4°C short term. For long term storage, store at -20°C, avoiding freeze/thaw cycles.

**NOTE**

For Research Use Only. Not for diagnostic, therapeutics, prophylactic or in vivo use.