

## DATASHEET

# NCAPG Rabbit Polyclonal Antibody

CAT. NO. APA16252

### KEY FEATURES

Target	NCAPG	Source / Host	Rabbit
Reactivity	Human	Clonality	Polyclonal
Applications	WB	Conjugation	Unconjugated
Form / Buffer	Liquid in 0.42% Potassium phosphate, 0.87% Sodium chloride, pH 7.3, 30% glycerol, and 0.01% sodium azide.		Storage at -20°C

### BACKGROUND

Regulatory subunit of the condensin complex, a complex required for conversion of interphase chromatin into mitotic-like condense chromosomes. The condensin complex probably introduces positive supercoils into relaxed DNA in the presence of type I topoisomerases and converts nicked DNA into positive knotted forms in the presence of type II topoisomerases.

### APPLICATION

To ensure optimal assay performance, AREX recommends conducting reagent titration tailored to each testing system for optimal detection results.

WB	1:500 - 1:2000
----	----------------

\*Results are sample-specific. Please refer to your local assay conditions and test parameters for reference.

### PRODUCT OVERVIEW

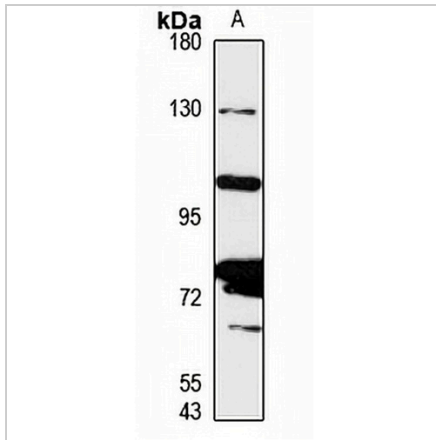
Description	Rabbit polyclonal antibody to NCAPG
Specificity	Recognizes endogenous levels of NCAPG protein
Antibody Type	Primary antibody
Immunogen	Recombinant fusion protein of human NCAPG. The exact sequence is proprietary.
Purification	The antibody was purified by immunogen affinity chromatography.
Molecular Weight	Predicted: 114 kD; Observed: 114 kD
Form/Buffer	Liquid in 0.42% Potassium phosphate, 0.87% Sodium chloride, pH 7.3, 30% glycerol, and 0.01% sodium azide.
Alternative Names	CAPG; NYMEL3; Condensin complex subunit 3; Chromosome-associated protein G; Condensin subunit CAP-G; hCAP-G; Melanoma antigen NY-MEL-3; Non-SMC condensin I complex subunit G; XCAP-G homolog
Gene Symbol	NCAPG
Entrez Gene	64151(Human)
SwissProt	Q9BPX3(Human)

\*AREX continuously optimizes our products. Webpage content may not reflect the latest updates. For inquiries, please contact [info@arexbio.com](mailto:info@arexbio.com) or your local distributor.

\*Clone Number, Reactivity, Source/Host and Clonality can be found in the product name and Key Features section above.

**DATASHEET****NCAPG Rabbit Polyclonal Antibody**

CAT. NO. APA16252

**DATA**

Western blot analysis of NCAPG expression in HEK293T (A) whole cell lysates. (Predicted band size: 114 kD; Observed band size: 114 kD)

**STORAGE**

Store at 4°C short term. For long term storage, store at -20°C, avoiding freeze/thaw cycles.

**NOTE**

For Research Use Only. Not for diagnostic, therapeutics, prophylactic or in vivo use.