

DATASHEET

AADACL1 Rabbit Polyclonal Antibody

CAT. NO. APA16253

KEY FEATURES

Target	AADACL1	Source / Host	Rabbit
Reactivity	Human, Mouse, Rat	Clonality	Polyclonal
Applications	WB	Conjugation	Unconjugated
Form / Buffer	Liquid in 0.42% Potassium phosphate, 0.87% Sodium chloride, pH 7.3, 30% glycerol, and 0.01% sodium azide.		Storage at-20°C

BACKGROUND

Hydrolyzes 2-acetyl monoalkylglycerol ether (1-O-alkyl-2-acetyl-sn-glycerol), the penultimate precursor of the pathway for de novo synthesis of platelet-activating factor, the penultimate precursor of the pathway for de novo synthesis of platelet-activating factor. May be responsible for the hydrolysis of cholesterol esters (such as cholesteryl (9Z-octadecenoate)) in macrophages. Also involved in organ detoxification by hydrolyzing exogenous organophosphorus compounds. May contribute to cancer pathogenesis by promoting tumor cell migration.

APPLICATION

To ensure optimal assay performance, AREX recommends conducting reagent titration tailored to each testing system for optimal detection results.

WB	1:500 - 1:2000
----	----------------

*Results are sample-specific. Please refer to your local assay conditions and test parameters for reference.

PRODUCT OVERVIEW

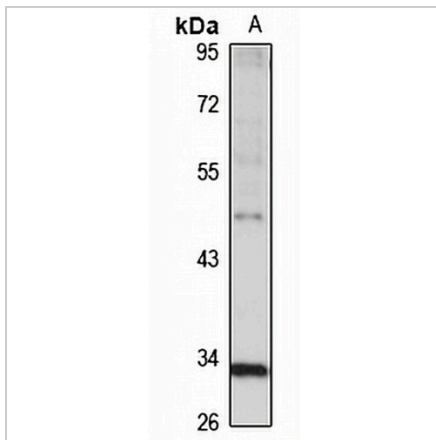
Description	Rabbit polyclonal antibody to AADACL1
Specificity	Recognizes endogenous levels of AADACL1 protein
Antibody Type	Primary antibody
Immunogen	Recombinant fusion protein of human AADACL1. The exact sequence is proprietary.
Purification	The antibody was purified by immunogen affinity chromatography.
Molecular Weight	Predicted: 45 kD; Observed: 46 kD
Form/Buffer	Liquid in 0.42% Potassium phosphate, 0.87% Sodium chloride, pH 7.3, 30% glycerol, and 0.01% sodium azide.
Alternative Names	AADACL1; KIAA1363; Neutral cholesterol ester hydrolase 1; NCEH; Arylacetamide deacetylase-like 1
Gene Symbol	NCEH1
Entrez Gene	57552(Human); 320024(Mouse); 294930(Rat)
SwissProt	Q6PIU2(Human); Q8BLF1(Mouse); B2GV54(Rat)

*AREX continuously optimizes our products. Webpage content may not reflect the latest updates. For inquiries, please contact info@arexbio.com or your local distributor.

*Clone Number, Reactivity, Source/Host and Clonality can be found in the product name and Key Features section above.

DATASHEET**AADACL1 Rabbit Polyclonal Antibody**

CAT. NO. APA16253

DATA

Western blot analysis of AADACL1 expression in PC3 (A) whole cell lysates. (Predicted band size: 45 kD; Observed band size: 46 kD)

STORAGE

Store at 4°C short term. For long term storage, store at -20°C, avoiding freeze/thaw cycles.

NOTE

For Research Use Only. Not for diagnostic, therapeutics, prophylactic or in vivo use.