

DATASHEET

NDUFAB1 Rabbit Polyclonal Antibody

CAT. NO. APA16258

KEY FEATURES

Target	NDUFAB1	Source / Host	Rabbit
Reactivity	Human, Mouse	Clonality	Polyclonal
Applications	WB	Conjugation	Unconjugated
Form / Buffer	Liquid in 0.42% Potassium phosphate, 0.87% Sodium chloride, pH 7.3, 30% glycerol, and 0.01% sodium azide.		Storage at-20°C

BACKGROUND

Carrier of the growing fatty acid chain in fatty acid biosynthesis . Accessory and non-catalytic subunit of the mitochondrial membrane respiratory chain NADH dehydrogenase (Complex I), which functions in the transfer of electrons from NADH to the respiratory chain . Accessory protein, of the core iron-sulfur cluster (ISC) assembly complex, that regulates, in association with LYRM4, the stability and the cysteine desulfurase activity of NFS1 and participates in the [2Fe-2S] clusters assembly on the scaffolding protein ISCU . The core iron-sulfur cluster (ISC) assembly complex is involved in the de novo synthesis of a [2Fe-2S] cluster, the first step of the mitochondrial iron-sulfur protein biogenesis.

APPLICATION

To ensure optimal assay performance, AREX recommends conducting reagent titration tailored to each testing system for optimal detection results.

WB	1:500 - 1:1000
----	----------------

*Results are sample-specific. Please refer to your local assay conditions and test parameters for reference.

PRODUCT OVERVIEW

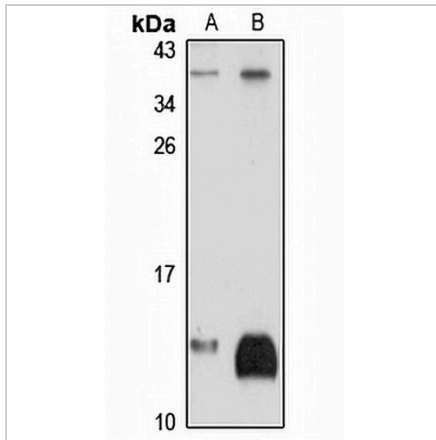
Description	Rabbit polyclonal antibody to NDUFAB1
Specificity	Recognizes endogenous levels of NDUFAB1 protein
Antibody Type	Primary antibody
Immunogen	KLH-conjugated synthetic peptide of human NDUFAB1. The exact sequence is proprietary.
Purification	The antibody was purified by immunogen affinity chromatography.
Molecular Weight	Predicted: 17Da; Observed: 12 kD
Form/Buffer	Liquid in 0.42% Potassium phosphate, 0.87% Sodium chloride, pH 7.3, 30% glycerol, and 0.01% sodium azide.
Alternative Names	Acyl carrier protein mitochondrial; ACP; CI-SDAP; NADH-ubiquinone oxidoreductase 9.6 kDa subunit
Gene Symbol	NDUFAB1
Entrez Gene	4706(Human); 70316(Mouse)
SwissProt	O14561(Human); Q9CR21(Mouse)

*AREX continuously optimizes our products. Webpage content may not reflect the latest updates. For inquiries, please contact info@arexbio.com or your local distributor.

*Clone Number, Reactivity, Source/Host and Clonality can be found in the product name and Key Features section above.

DATASHEET**NDUFAB1 Rabbit Polyclonal Antibody**

CAT. NO. APA16258

DATA

Western blot analysis of NDUFB1 expression in HT29 (A), U87MG (B) whole cell lysates.
(Predicted band size: 17Da; Observed band size: 12 kD)

STORAGE

Store at 4°C short term. For long term storage, store at -20°C, avoiding freeze/thaw cycles.

NOTE

For Research Use Only. Not for diagnostic, therapeutics, prophylactic or in vivo use.