

DATASHEET

NDUFAF2 Rabbit Polyclonal Antibody

CAT. NO. APA16260

KEY FEATURES

Target	NDUFAF2	Source / Host	Rabbit
Reactivity	Human, Mouse, Rat	Clonality	Polyclonal
Applications	WB, IF/ICC	Conjugation	Unconjugated
Form / Buffer	Liquid in 0.42% Potassium phosphate, 0.87% Sodium chloride, pH 7.3, 30% glycerol, and 0.01% sodium azide.		Storage at -20°C

BACKGROUND

Acts as a molecular chaperone for mitochondrial complex I assembly . Complex I functions in the transfer of electrons from NADH to the respiratory chain. The immediate electron acceptor for the enzyme is believed to be ubiquinone . Is involved in the initial steps of cilia formation, including removal of CP110 from the mother centrioles, docking of membrane vesicles to the mother centrioles, and establishment of the transition zone .

APPLICATION

To ensure optimal assay performance, AREX recommends conducting reagent titration tailored to each testing system for optimal detection results.

WB	1:500 - 1:2000
IF/ICC	1:50 - 1:200

*Results are sample-specific. Please refer to your local assay conditions and test parameters for reference.

PRODUCT OVERVIEW

Description	Rabbit polyclonal antibody to NDUFAF2
Specificity	Recognizes endogenous levels of NDUFAF2 protein
Antibody Type	Primary antibody
Immunogen	Recombinant fusion protein of human NDUFAF2. The exact sequence is proprietary.
Purification	The antibody was purified by immunogen affinity chromatography.
Molecular Weight	Predicted: 19 kD; Observed: 20 kD
Form/Buffer	Liquid in 0.42% Potassium phosphate, 0.87% Sodium chloride, pH 7.3, 30% glycerol, and 0.01% sodium azide.
Alternative Names	NDUFA12L; Mimitin mitochondrial; B17.2-like; B17.2L; Myc-induced mitochondrial protein; MMTN; NADH dehydrogenase [ubiquinone] 1 alpha subcomplex assembly factor 2; NDUFA12-like protein
Gene Symbol	NDUFAF2
Entrez Gene	91942(Human); 75597(Mouse)
SwissProt	Q8N183(Human); Q59J78(Mouse)

*AREX continuously optimizes our products. Webpage content may not reflect the latest updates. For inquiries, please contact info@arexbio.com or your local distributor.

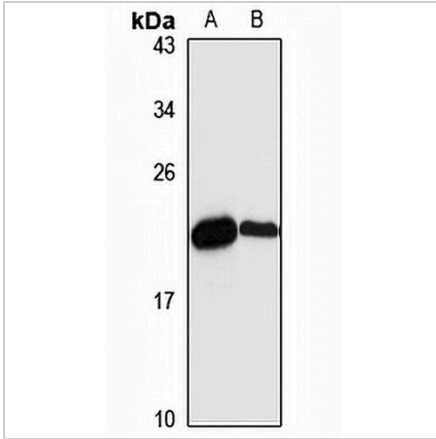
*Clone Number, Reactivity, Source/Host and Clonality can be found in the product name and Key Features section above.

DATASHEET

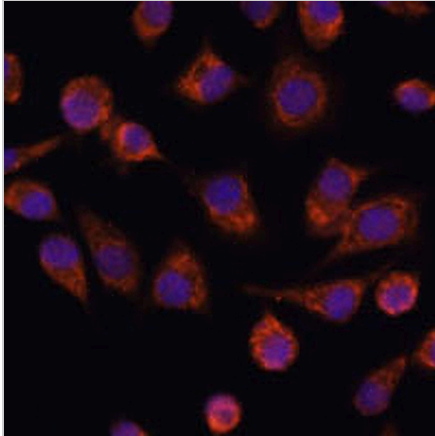
NDUFAF2 Rabbit Polyclonal Antibody

CAT. NO. APA16260

DATA



Western blot analysis of NDUFAF2 expression in HeLa (A), rat heart (B) whole cell lysates. (Predicted band size: 19 kD; Observed band size: 20 kD)



Immunofluorescent analysis of NDUFAF2 staining in L929 cells. Formalin-fixed cells were permeabilized with 0.1% Triton X-100 in TBS for 5-10 minutes and blocked with 3% BSA-PBS for 30 minutes at room temperature. Cells were probed with the primary antibody in 3% BSA-PBS and incubated overnight at 4 °C in a humidified chamber. Cells were washed with PBST and incubated with a AREX® Fluor 594-conjugated secondary antibody (red) in PBS at room temperature in the dark. DAPI was used to stain the cell nuclei (blue).

STORAGE

Store at 4°C short term. For long term storage, store at -20°C, avoiding freeze/thaw cycles.

NOTE

For Research Use Only. Not for diagnostic, therapeutics, prophylactic or in vivo use.