

DATASHEET

NEK6 Rabbit Polyclonal Antibody

CAT. NO. APA16266

KEY FEATURES

Target	NEK6	Source / Host	Rabbit
Reactivity	Human, Mouse, Rat	Clonality	Polyclonal
Applications	WB	Conjugation	Unconjugated
Form / Buffer	Liquid in 0.42% Potassium phosphate, 0.87% Sodium chloride, pH 7.3, 30% glycerol, and 0.01% sodium azide.		Storage at -20°C

BACKGROUND

Protein kinase which plays an important role in mitotic cell cycle progression . Required for chromosome segregation at metaphase-anaphase transition, robust mitotic spindle formation and cytokinesis . Phosphorylates ATF4, CIRS1, PTN, RAD26L, RBBP6, RPS7, RPS6KB1, TRIP4, STAT3 and histones H1 and H3 . Phosphorylates KIF11 to promote mitotic spindle formation . Involved in G2/M phase cell cycle arrest induced by DNA damage . Inhibition of activity results in apoptosis. May contribute to tumorigenesis by suppressing p53/TP53-induced cancer cell senescence . Phosphorylates EML4 at 'Ser-144', promoting its dissociation from microtubules during mitosis which is required for efficient chromosome congression .

APPLICATION

To ensure optimal assay performance, AREX recommends conducting reagent titration tailored to each testing system for optimal detection results.

WB	1:500 - 1:2000
----	----------------

*Results are sample-specific. Please refer to your local assay conditions and test parameters for reference.

PRODUCT OVERVIEW

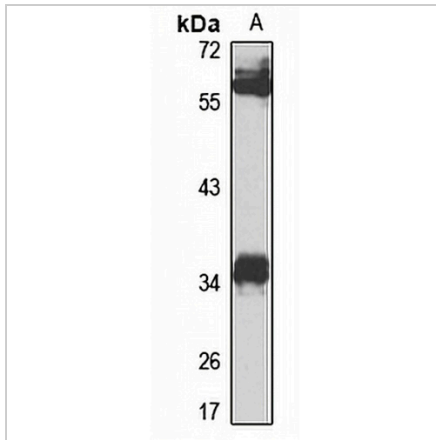
Description	Rabbit polyclonal antibody to NEK6
Specificity	Recognizes endogenous levels of NEK6 protein
Antibody Type	Primary antibody
Immunogen	Recombinant fusion protein of human NEK6. The exact sequence is proprietary.
Purification	The antibody was purified by immunogen affinity chromatography.
Molecular Weight	Predicted: 35; Observed: 36 kD
Form/Buffer	Liquid in 0.42% Potassium phosphate, 0.87% Sodium chloride, pH 7.3, 30% glycerol, and 0.01% sodium azide.
Alternative Names	Serine/threonine-protein kinase Nek6; Never in mitosis A-related kinase 6; NimA-related protein kinase 6; Protein kinase SID6-1512
Gene Symbol	NEK6
Entrez Gene	10783(Human); 59126(Mouse); 360161(Rat)
SwissProt	Q9HC98(Human); Q9ES70(Mouse); P59895(Rat)

*AREX continuously optimizes our products. Webpage content may not reflect the latest updates. For inquiries, please contact info@arexbio.com or your local distributor.

*Clone Number, Reactivity, Source/Host and Clonality can be found in the product name and Key Features section above.

DATASHEET**NEK6 Rabbit Polyclonal Antibody**

CAT. NO. APA16266

DATA

Western blot analysis of NEK6 expression in HEK293T (A) whole cell lysates. (Predicted band size: 35; 37; 38; 39 kD; Observed band size: 36 kD)

STORAGE

Store at 4°C short term. For long term storage, store at -20°C, avoiding freeze/thaw cycles.

NOTE

For Research Use Only. Not for diagnostic, therapeutics, prophylactic or in vivo use.