

DATASHEET

Neu2 Rabbit Polyclonal Antibody

CAT. NO. APA16271

KEY FEATURES

Target	Neu2	Source / Host	Rabbit
Reactivity	Human	Clonality	Polyclonal
Applications	WB	Conjugation	Unconjugated
Form / Buffer	Liquid in 0.42% Potassium phosphate, 0.87% Sodium chloride, pH 7.3, 30% glycerol, and 0.01% sodium azide.		Storage at -20°C

BACKGROUND

Exo-alpha-sialidase that catalyzes the hydrolytic cleavage of the terminal sialic acid (N-acetylneuraminic acid, Neu5Ac) of a glycan moiety in the catabolism of glycolipids, glycoproteins and oligosaccharides of a glycan moiety in the catabolism of glycolipids, glycoproteins and oligosaccharides . Recognizes sialyl linkage positions of the glycan moiety as well as the supramolecular organization of the sialoglycoconjugate. Displays preference for alpha-(2->3)-sialylated GD1a and GT1B gangliosides over alpha-(2->8)-sialylated GD1b, in both monomeric forms and micelles. Hydrolyzes monomeric GM1 ganglioside, but has no activity toward the miscellar form .

APPLICATION

To ensure optimal assay performance, AREX recommends conducting reagent titration tailored to each testing system for optimal detection results.

WB	1:500 - 1:2000
----	----------------

*Results are sample-specific. Please refer to your local assay conditions and test parameters for reference.

PRODUCT OVERVIEW

Description	Rabbit polyclonal antibody to Neu2
Specificity	Recognizes endogenous levels of Neu2 protein
Antibody Type	Primary antibody
Immunogen	Recombinant fusion protein of human Neu2. The exact sequence is proprietary.
Purification	The antibody was purified by immunogen affinity chromatography.
Molecular Weight	Predicted: 42 kD; Observed: 42 kD
Form/Buffer	Liquid in 0.42% Potassium phosphate, 0.87% Sodium chloride, pH 7.3, 30% glycerol, and 0.01% sodium azide.
Alternative Names	Sialidase-2; Cytosolic sialidase; N-acetyl-alpha-neuraminidase 2
Gene Symbol	NEU2
Entrez Gene	4759(Human)
SwissProt	Q9Y3R4(Human)

*AREX continuously optimizes our products. Webpage content may not reflect the latest updates. For inquiries, please contact info@arexbio.com or your local distributor.

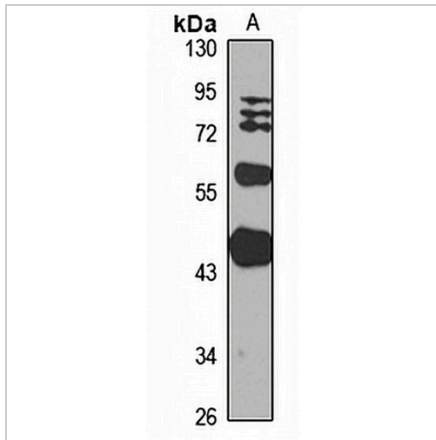
*Clone Number, Reactivity, Source/Host and Clonality can be found in the product name and Key Features section above.

DATASHEET

Neu2 Rabbit Polyclonal Antibody

CAT. NO. APA16271

DATA



Western blot analysis of Neu2 expression in Raji (A) whole cell lysates. (Predicted band size: 42 kD; Observed band size: 42 kD)

STORAGE

Store at 4°C short term. For long term storage, store at -20°C, avoiding freeze/thaw cycles.

NOTE

For Research Use Only. Not for diagnostic, therapeutics, prophylactic or in vivo use.