

DATASHEET

NFE2L1 Rabbit Polyclonal Antibody

CAT. NO. APA16276

KEY FEATURES

Target	NFE2L1	Source / Host	Rabbit
Reactivity	Human, Mouse, Rat	Clonality	Polyclonal
Applications	WB, IHC, IF/ICC	Conjugation	Unconjugated
Form / Buffer	Liquid in 0.42% Potassium phosphate, 0.87% Sodium chloride, pH 7.3, 30% glycerol, and 0.01% sodium azide.		Storage at -20°C

BACKGROUND

Endoplasmic reticulum membrane sensor that translocates into the nucleus in response to various stresses to act as a transcription factor . Constitutes a precursor of the transcription factor NRF1 . Able to detect various cellular stresses, such as cholesterol excess, oxidative stress or proteasome inhibition . In response to stress, it is released from the endoplasmic reticulum membrane following cleavage by the protease DDI2 and translocates into the nucleus to form the transcription factor NRF1 .

APPLICATION

To ensure optimal assay performance, AREX recommends conducting reagent titration tailored to each testing system for optimal detection results.

WB	1:500 - 1:2000
IHC	1:50 - 1:200
IF/ICC	1:50 - 1:200

*Results are sample-specific. Please refer to your local assay conditions and test parameters for reference.

PRODUCT OVERVIEW

Description	Rabbit polyclonal antibody to NFE2L1
Specificity	Recognizes endogenous levels of NFE2L1 protein
Antibody Type	Primary antibody
Immunogen	Recombinant fusion protein of human NFE2L1. The exact sequence is proprietary.
Purification	The antibody was purified by immunogen affinity chromatography.
Molecular Weight	Predicted: 81; Observed: 120 kD
Form/Buffer	Liquid in 0.42% Potassium phosphate, 0.87% Sodium chloride, pH 7.3, 30% glycerol, and 0.01% sodium azide.
Alternative Names	HBZ17; NRF1; TCF11; Nuclear factor erythroid 2-related factor 1; NF-E2-related factor 1; NFE2-related factor 1; Locus control region-factor 1; Nuclear factor erythroid derived 2 like 1; Transcription factor 11; TCF-11; Transcription factor HBZ17; Transcription factor LCR-F1
Gene Symbol	NFE2L1
Entrez Gene	4779(Human); 18023(Mouse)
SwissProt	Q14494(Human); Q61985(Mouse)

*AREX continuously optimizes our products. Webpage content may not reflect the latest updates. For inquiries, please contact info@arexbio.com or your local distributor.

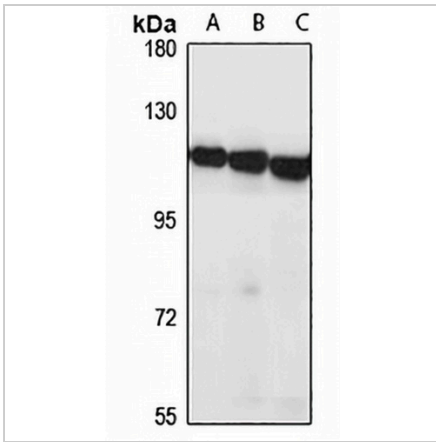
*Clone Number, Reactivity, Source/Host and Clonality can be found in the product name and Key Features section above.

DATASHEET

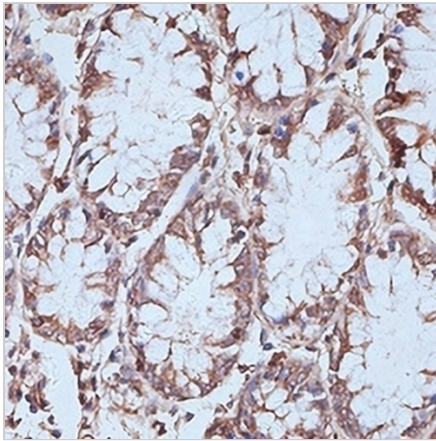
NFE2L1 Rabbit Polyclonal Antibody

CAT. NO. APA16276

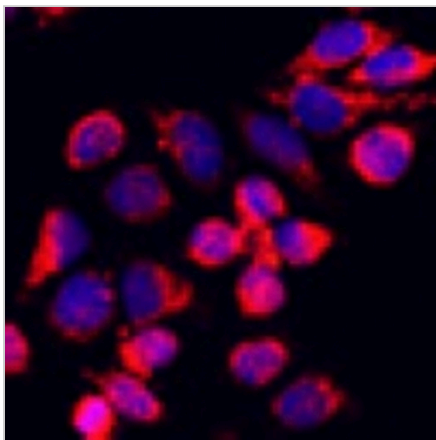
DATA



Western blot analysis of NFE2L1 expression in Jurkat (A), PC12 (B), mouse lung (C) whole cell lysates. (Predicted band size: 81; 84 kD; Observed band size: 120 kD)



Immunohistochemical analysis of NFE2L1 staining in human colon formalin fixed paraffin embedded tissue section. The section was pre-treated using heat mediated antigen retrieval with sodium citrate buffer (pH 6.0). The section was then incubated with the antibody at room temperature and detected using an HRP conjugated compact polymer system. DAB was used as the chromogen. The section was then counterstained with haematoxylin and mounted with DPX.



Immunofluorescent analysis of NFE2L1 staining in HeLa cells. Formalin-fixed cells were permeabilized with 0.1% Triton X-100 in TBS for 5-10 minutes and blocked with 3% BSA-PBS for 30 minutes at room temperature. Cells were probed with the primary antibody in 3% BSA-PBS and incubated overnight at 4 °C in a humidified chamber. Cells were washed with PBST and incubated with a Alexa Fluor 594-conjugated secondary antibody (red) in PBS at room temperature in the dark.

STORAGE

Store at 4°C short term. For long term storage, store at -20°C, avoiding freeze/thaw cycles.

NOTE

For Research Use Only. Not for diagnostic, therapeutics, prophylactic or in vivo use.