

**DATASHEET**

**Bex3 Rabbit Polyclonal Antibody**

CAT. NO. APA16284

**KEY FEATURES**

Target	Bex3	Source / Host	Rabbit
Reactivity	Human, Mouse, Rat	Clonality	Polyclonal
Applications	WB, IF/ICC	Conjugation	Unconjugated
Form / Buffer	Liquid in 0.42% Potassium phosphate, 0.87% Sodium chloride, pH 7.3, 30% glycerol, and 0.01% sodium azide.		Storage at -20°C

**BACKGROUND**

May be a signaling adapter molecule involved in NGFR/p75NTR-mediated apoptosis induced by NGF. Plays a role in zinc-triggered neuronal death. In absence of reductive stress, acts as a pseudosubstrate for the CRL2(FEM1B) complex: associates with FEM1B via zinc, thereby preventing association between FEM1B and its substrates.

**APPLICATION**

To ensure optimal assay performance, AREX recommends conducting reagent titration tailored to each testing system for optimal detection results.

WB	1:500 - 1:2000
IF/ICC	1:50 - 1:200

\*Results are sample-specific. Please refer to your local assay conditions and test parameters for reference.

**PRODUCT OVERVIEW**

Description	Rabbit polyclonal antibody to Bex3
Specificity	Recognizes endogenous levels of Bex3 protein
Antibody Type	Primary antibody
Immunogen	Recombinant fusion protein of human Bex3. The exact sequence is proprietary.
Purification	The antibody was purified by immunogen affinity chromatography.
Molecular Weight	Predicted: 11; Observed: 24 kD
Form/Buffer	Liquid in 0.42% Potassium phosphate, 0.87% Sodium chloride, pH 7.3, 30% glycerol, and 0.01% sodium azide.
Alternative Names	BEX3; DXS6984E; NADE; Protein BEX3; Brain-expressed X-linked protein 3; Nerve growth factor receptor-associated protein 1; Ovarian granulosa cell 13.0 kDa protein HGR74; p75NTR-associated cell death executor
Gene Symbol	NGFRAP1
Entrez Gene	27018(Human); 12070(Mouse); 117089(Rat)
SwissProt	Q00994(Human); Q9WTZ9(Mouse); Q6PDU5(Rat)

\*AREX continuously optimizes our products. Webpage content may not reflect the latest updates. For inquiries, please contact [info@arexbio.com](mailto:info@arexbio.com) or your local distributor.

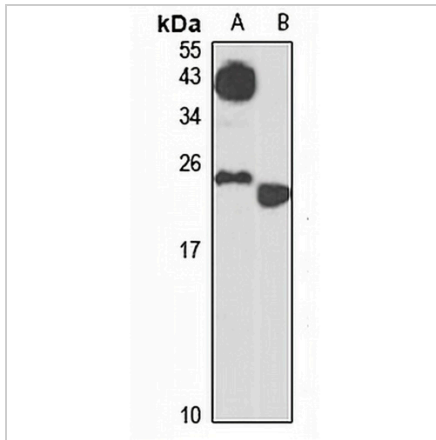
\*Clone Number, Reactivity, Source/Host and Clonality can be found in the product name and Key Features section above.

**DATASHEET**

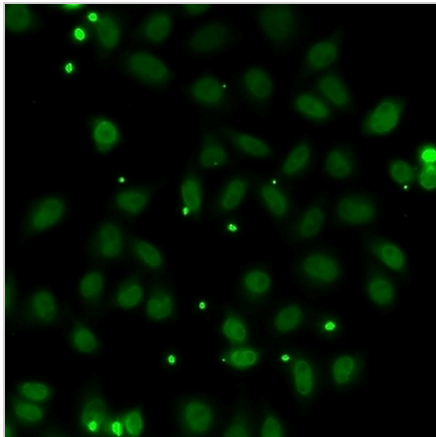
**Bex3 Rabbit Polyclonal Antibody**

CAT. NO. APA16284

**DATA**



Western blot analysis of Bex3 expression in MCF7 (A), mouse liver (B) whole cell lysates. (Predicted band size: 11; 12 kD; Observed band size: 24 kD)



Immunofluorescent analysis of Bex3 staining in MCF7 cells. Formalin-fixed cells were permeabilized with 0.1% Triton X-100 in TBS for 5-10 minutes and blocked with 3% BSA-PBS for 30 minutes at room temperature. Cells were probed with the primary antibody in 3% BSA-PBS and incubated overnight at 4 °C in a humidified chamber. Cells were washed with PBST and incubated with a Alexa Fluor 488-conjugated secondary antibody (green) in PBS at room temperature in the dark.

**STORAGE**

Store at 4°C short term. For long term storage, store at -20°C, avoiding freeze/thaw cycles.

**NOTE**

For Research Use Only. Not for diagnostic, therapeutics, prophylactic or in vivo use.