

DATASHEET

NIF3L1 Rabbit Polyclonal Antibody

CAT. NO. APA16289

KEY FEATURES

Target	NIF3L1	Source / Host	Rabbit
Reactivity	Human, Mouse	Clonality	Polyclonal
Applications	WB	Conjugation	Unconjugated
Form / Buffer	Liquid in 0.42% Potassium phosphate, 0.87% Sodium chloride, pH 7.3, 30% glycerol, and 0.01% sodium azide.		Storage at -20°C

BACKGROUND

May function as a transcriptional corepressor through its interaction with COPS2, negatively regulating the expression of genes involved in neuronal differentiation.

APPLICATION

To ensure optimal assay performance, AREX recommends conducting reagent titration tailored to each testing system for optimal detection results.

WB	1:500 - 1:2000
----	----------------

*Results are sample-specific. Please refer to your local assay conditions and test parameters for reference.

PRODUCT OVERVIEW

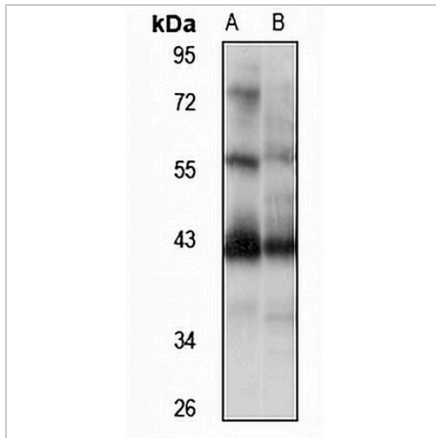
Description	Rabbit polyclonal antibody to NIF3L1
Specificity	Recognizes endogenous levels of NIF3L1 protein
Antibody Type	Primary antibody
Immunogen	Recombinant fusion protein of human NIF3L1. The exact sequence is proprietary.
Purification	The antibody was purified by immunogen affinity chromatography.
Molecular Weight	Predicted: 32; Observed: 42 kD
Form/Buffer	Liquid in 0.42% Potassium phosphate, 0.87% Sodium chloride, pH 7.3, 30% glycerol, and 0.01% sodium azide.
Alternative Names	ALS2CR1; Putative GTP cyclohydrolase 1 type 2 NIF3L1; Amyotrophic lateral sclerosis 2 chromosomal region candidate gene 1 protein; GTP cyclohydrolase I; NIF3-like protein 1
Gene Symbol	NIF3L1
Entrez Gene	60491(Human); 65102(Mouse)
SwissProt	Q9GZT8(Human); Q9EQ80(Mouse)

*AREX continuously optimizes our products. Webpage content may not reflect the latest updates. For inquiries, please contact info@arexbio.com or your local distributor.

*Clone Number, Reactivity, Source/Host and Clonality can be found in the product name and Key Features section above.

DATASHEET**NIF3L1 Rabbit Polyclonal Antibody**

CAT. NO. APA16289

DATA

Western blot analysis of NIF3L1 expression in HepG2 (A), mouse heart (B) whole cell lysates. (Predicted band size: 32; 38; 41 kD; Observed band size: 42 kD)

STORAGE

Store at 4°C short term. For long term storage, store at -20°C, avoiding freeze/thaw cycles.

NOTE

For Research Use Only. Not for diagnostic, therapeutics, prophylactic or in vivo use.