

DATASHEET

NKRF Rabbit Polyclonal Antibody

CAT. NO. APA16292

KEY FEATURES

Target	NKRF	Source / Host	Rabbit
Reactivity	Human, Mouse	Clonality	Polyclonal
Applications	WB	Conjugation	Unconjugated
Form / Buffer	Liquid in 0.42% Potassium phosphate, 0.87% Sodium chloride, pH 7.3, 30% glycerol, and 0.01% sodium azide.		Storage at -20°C

BACKGROUND

Enhances the ATPase activity of DHX15 by acting like a brace that tethers mobile sections of DHX15 together, stabilizing a functional conformation with high RNA affinity of DHX15 . Involved in the constitutive silencing of the interferon beta promoter, independently of the virus-induced signals, and in the inhibition of the basal and cytokine-induced iNOS promoter activity . Also involved in the regulation of IL-8 transcription . May also act as a DNA-binding transcription regulator: interacts with a specific negative regulatory element (NRE) 5'-AATTCCTCTGA-3' to mediate transcriptional repression of certain NK-kappa-B responsive genes .

APPLICATION

To ensure optimal assay performance, AREX recommends conducting reagent titration tailored to each testing system for optimal detection results.

WB	1:500 - 1:2000
----	----------------

*Results are sample-specific. Please refer to your local assay conditions and test parameters for reference.

PRODUCT OVERVIEW

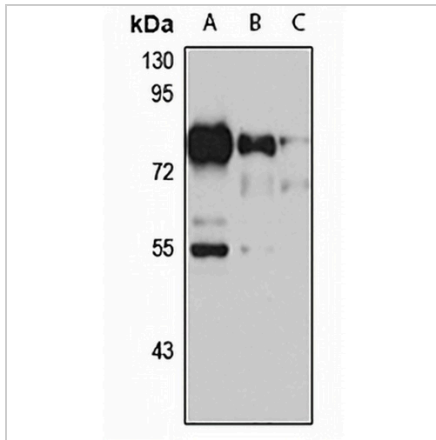
Description	Rabbit polyclonal antibody to NKRF
Specificity	Recognizes endogenous levels of NKRF protein
Antibody Type	Primary antibody
Immunogen	Recombinant fusion protein of human NKRF. The exact sequence is proprietary.
Purification	The antibody was purified by immunogen affinity chromatography.
Molecular Weight	Predicted: 77; Observed: 78 kD
Form/Buffer	Liquid in 0.42% Potassium phosphate, 0.87% Sodium chloride, pH 7.3, 30% glycerol, and 0.01% sodium azide.
Alternative Names	ITBA4; NRF; NF-kappa-B-repressing factor; NFkB-repressing factor; Protein ITBA4; Transcription factor NRF
Gene Symbol	NKRF
Entrez Gene	55922(Human); 77286(Mouse)
SwissProt	O15226(Human); Q8BY02(Mouse)

*AREX continuously optimizes our products. Webpage content may not reflect the latest updates. For inquiries, please contact info@arexbio.com or your local distributor.

*Clone Number, Reactivity, Source/Host and Clonality can be found in the product name and Key Features section above.

DATASHEET**NKRF Rabbit Polyclonal Antibody**

CAT. NO. APA16292

DATA

Western blot analysis of NKRF expression in Jurkat (A), A549 (B), mouse brain (C) whole cell lysates. (Predicted band size: 77; 79 kD; Observed band size: 78 kD)

STORAGE

Store at 4°C short term. For long term storage, store at -20°C, avoiding freeze/thaw cycles.

NOTE

For Research Use Only. Not for diagnostic, therapeutics, prophylactic or in vivo use.