

DATASHEET

NALP12 Rabbit Polyclonal Antibody

CAT. NO. APA16297

KEY FEATURES

Target	NALP12	Source / Host	Rabbit
Reactivity	Human	Clonality	Polyclonal
Applications	WB	Conjugation	Unconjugated
Form / Buffer	Liquid in 0.42% Potassium phosphate, 0.87% Sodium chloride, pH 7.3, 30% glycerol, and 0.01% sodium azide.		Storage at -20°C

BACKGROUND

Plays an essential role as an potent mitigator of inflammation . Primarily expressed in dendritic cells and macrophages, inhibits both canonical and non-canonical NF-kappa-B and ERK activation pathways . Functions as a negative regulator of NOD2 by targeting it to degradation via the proteasome pathway . In turn, promotes bacterial tolerance . Also inhibits the RIGI-mediated immune signaling against RNA viruses by reducing the E3 ubiquitin ligase TRIM25-mediated 'Lys-63'-linked RIGI activation but enhancing the E3 ubiquitin ligase RNF125-mediated 'Lys-48'-linked RIGI degradation . Also acts as a negative regulator of inflammatory response to mitigate obesity and obesity-associated diseases in adipose tissue .

APPLICATION

To ensure optimal assay performance, AREX recommends conducting reagent titration tailored to each testing system for optimal detection results.

WB	1:500 - 1:1000
----	----------------

*Results are sample-specific. Please refer to your local assay conditions and test parameters for reference.

PRODUCT OVERVIEW

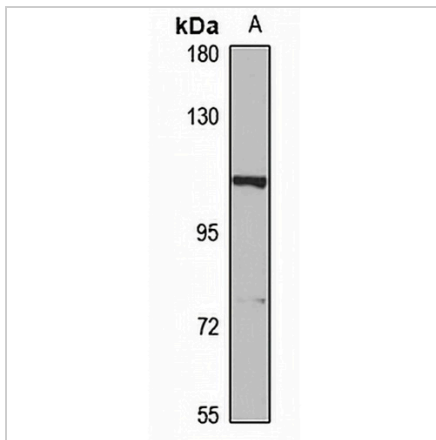
Description	Rabbit polyclonal antibody to NALP12
Specificity	Recognizes endogenous levels of NALP12 protein
Antibody Type	Primary antibody
Immunogen	Recombinant fusion protein of human NALP12. The exact sequence is proprietary.
Purification	The antibody was purified by immunogen affinity chromatography.
Molecular Weight	Predicted: 31; Observed: 120 kD
Form/Buffer	Liquid in 0.42% Potassium phosphate, 0.87% Sodium chloride, pH 7.3, 30% glycerol, and 0.01% sodium azide.
Alternative Names	NALP12; PYPAF7; RNO; NACHT LRR and PYD domains-containing protein 12; Monarch-1; PYRIN-containing APAF1-like protein 7; Regulated by nitric oxide
Gene Symbol	NLRP12
Entrez Gene	91662(Human)
SwissProt	P59046(Human)

*AREX continuously optimizes our products. Webpage content may not reflect the latest updates. For inquiries, please contact info@arexbio.com or your local distributor.

*Clone Number, Reactivity, Source/Host and Clonality can be found in the product name and Key Features section above.

DATASHEET**NALP12 Rabbit Polyclonal Antibody**

CAT. NO. APA16297

DATA

Western blot analysis of NALP12 expression in Jurkat (A) whole cell lysates. (Predicted band size: 31; 101; 107; 113; 114; 120 kD; Observed band size: 120 kD)

STORAGE

Store at 4°C short term. For long term storage, store at -20°C, avoiding freeze/thaw cycles.

NOTE

For Research Use Only. Not for diagnostic, therapeutics, prophylactic or in vivo use.