

DATASHEET

NLRP6 Rabbit Polyclonal Antibody

CAT. NO. APA16298

KEY FEATURES

Target	NLRP6	Source / Host	Rabbit
Reactivity	Human	Clonality	Polyclonal
Applications	WB	Conjugation	Unconjugated
Form / Buffer	Liquid in 0.42% Potassium phosphate, 0.87% Sodium chloride, pH 7.3, 30% glycerol, and 0.01% sodium azide.		Storage at -20°C

BACKGROUND

Acts as the sensor component of the NLRP6 inflammasome, which mediates inflammasome activation in response to various pathogen-associated signals, leading to maturation and secretion of IL1B and IL18 . Inflammasomes are supramolecular complexes that assemble in the cytosol in response to pathogens and other damage-associated signals and play critical roles in innate immunity and inflammation . Acts as a recognition receptor (PRR): recognizes and binds specific pathogens and other damage-associated signals, such as lipoteichoic acid (LTA), a cell-wall component of Gram-positive bacteria, or double stranded RNA (dsRNA) .

APPLICATION

To ensure optimal assay performance, AREX recommends conducting reagent titration tailored to each testing system for optimal detection results.

WB	1:500 - 1:2000
----	----------------

*Results are sample-specific. Please refer to your local assay conditions and test parameters for reference.

PRODUCT OVERVIEW

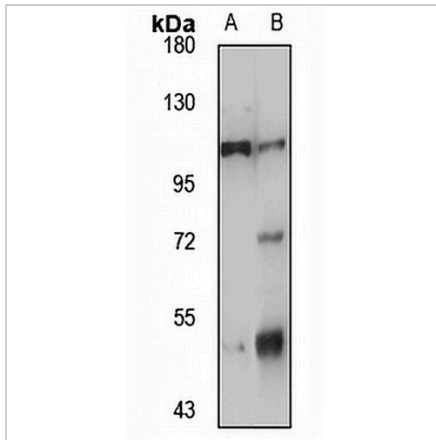
Description	Rabbit polyclonal antibody to NLRP6
Specificity	Recognizes endogenous levels of NLRP6 protein
Antibody Type	Primary antibody
Immunogen	KLH-conjugated synthetic peptide of human NLRP6. The exact sequence is proprietary.
Purification	The antibody was purified by immunogen affinity chromatography.
Molecular Weight	Predicted: 98 kD; Observed: 99 kD
Form/Buffer	Liquid in 0.42% Potassium phosphate, 0.87% Sodium chloride, pH 7.3, 30% glycerol, and 0.01% sodium azide.
Alternative Names	NALP6; PYPAF5; NACHT LRR and PYD domains-containing protein 6; Angiotensin II/vasopressin receptor; PYRIN-containing APAF1-like protein 5
Gene Symbol	NLRP6
Entrez Gene	171389(Human); 101613(Mouse); 171390(Rat)
SwissProt	P59044(Human); Q91WS2(Mouse); Q63035(Rat)

*AREX continuously optimizes our products. Webpage content may not reflect the latest updates. For inquiries, please contact info@arexbio.com or your local distributor.

*Clone Number, Reactivity, Source/Host and Clonality can be found in the product name and Key Features section above.

DATASHEET**NLRP6 Rabbit Polyclonal Antibody**

CAT. NO. APA16298

DATA

Western blot analysis of NLRP6 expression in A549 (A), mouse lung (B) whole cell lysates.
(Predicted band size: 98 kD; Observed band size: 99 kD)

STORAGE

Store at 4°C short term. For long term storage, store at -20°C, avoiding freeze/thaw cycles.

NOTE

For Research Use Only. Not for diagnostic, therapeutics, prophylactic or in vivo use.