

DATASHEET

NOL6 Rabbit Polyclonal Antibody

CAT. NO. APA16310

KEY FEATURES

Target	NOL6	Source / Host	Rabbit
Reactivity	Human, Mouse, Rat	Clonality	Polyclonal
Applications	WB	Conjugation	Unconjugated
Form / Buffer	Liquid in 0.42% Potassium phosphate, 0.87% Sodium chloride, pH 7.3, 30% glycerol, and 0.01% sodium azide.		Storage at -20°C

BACKGROUND

Part of the small subunit (SSU) processome, first precursor of the small eukaryotic ribosomal subunit. During the assembly of the SSU processome in the nucleolus, many ribosome biogenesis factors, an RNA chaperone and ribosomal proteins associate with the nascent pre-rRNA and work in concert to generate RNA folding, modifications, rearrangements and cleavage as well as targeted degradation of pre-ribosomal RNA by the RNA exosome.

APPLICATION

To ensure optimal assay performance, AREX recommends conducting reagent titration tailored to each testing system for optimal detection results.

WB	1:500 - 1:2000
----	----------------

*Results are sample-specific. Please refer to your local assay conditions and test parameters for reference.

PRODUCT OVERVIEW

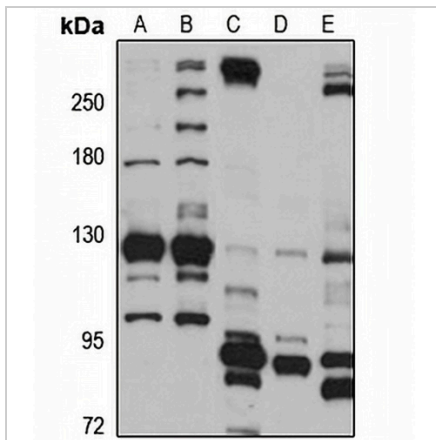
Description	Rabbit polyclonal antibody to NOL6
Specificity	Recognizes endogenous levels of NOL6 protein
Antibody Type	Primary antibody
Immunogen	Recombinant fusion protein of human NOL6. The exact sequence is proprietary.
Purification	The antibody was purified by immunogen affinity chromatography.
Molecular Weight	Predicted: 77; Observed: 127 kD
Form/Buffer	Liquid in 0.42% Potassium phosphate, 0.87% Sodium chloride, pH 7.3, 30% glycerol, and 0.01% sodium azide.
Alternative Names	Nucleolar protein 6; Nucleolar RNA-associated protein; Nrap
Gene Symbol	NOL6
Entrez Gene	65083(Human); 230082(Mouse)
SwissProt	Q9H6R4(Human); Q8R5K4(Mouse)

*AREX continuously optimizes our products. Webpage content may not reflect the latest updates. For inquiries, please contact info@arexbio.com or your local distributor.

*Clone Number, Reactivity, Source/Host and Clonality can be found in the product name and Key Features section above.

DATASHEET**NOL6 Rabbit Polyclonal Antibody**

CAT. NO. APA16310

DATA

Western blot analysis of NOL6 expression in A431 (A), HeLa (B), mouse brain (C), mouse liver (D), rat lung (E) whole cell lysates. (Predicted band size: 77; 112; 127 kD; Observed band size: 127 kD)

STORAGE

Store at 4°C short term. For long term storage, store at -20°C, avoiding freeze/thaw cycles.

NOTE

For Research Use Only. Not for diagnostic, therapeutics, prophylactic or in vivo use.