

**DATASHEET**

**NOMO2 Rabbit Polyclonal Antibody**

CAT. NO. APA16311

**KEY FEATURES**

Target	NOMO2	Source / Host	Rabbit
Reactivity	Human, Mouse, Rat	Clonality	Polyclonal
Applications	WB	Conjugation	Unconjugated
Form / Buffer	Liquid in 0.42% Potassium phosphate, 0.87% Sodium chloride, pH 7.3, 30% glycerol, and 0.01% sodium azide.		Storage at -20°C

**BACKGROUND**

Component of the multi-pass translocon (MPT) complex that mediates insertion of multi-pass membrane proteins into the lipid bilayer of membranes complex that mediates insertion of multi-pass membrane proteins into the lipid bilayer of membranes . The MPT complex takes over after the SEC61 complex: following membrane insertion of the first few transmembrane segments of proteins by the SEC61 complex, the MPT complex occludes the lateral gate of the SEC61 complex to promote insertion of subsequent transmembrane regions .

**APPLICATION**

To ensure optimal assay performance, AREX recommends conducting reagent titration tailored to each testing system for optimal detection results.

WB	1:500 - 1:2000
----	----------------

\*Results are sample-specific. Please refer to your local assay conditions and test parameters for reference.

**PRODUCT OVERVIEW**

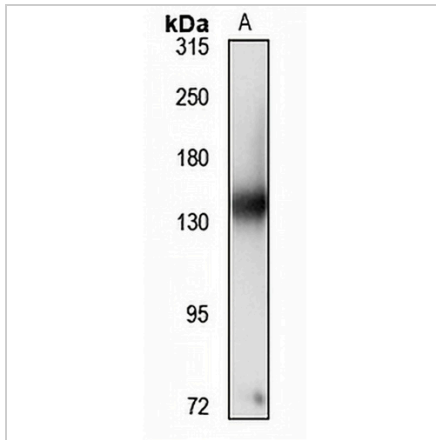
Description	Rabbit polyclonal antibody to NOMO2
Specificity	Recognizes endogenous levels of NOMO2 protein
Antibody Type	Primary antibody
Immunogen	Recombinant fusion protein of human NOMO2. The exact sequence is proprietary.
Purification	The antibody was purified by immunogen affinity chromatography.
Molecular Weight	Predicted: 122; Observed: 139 kD
Form/Buffer	Liquid in 0.42% Potassium phosphate, 0.87% Sodium chloride, pH 7.3, 30% glycerol, and 0.01% sodium azide.
Alternative Names	Nodal modulator 2; pM5 protein 2
Gene Symbol	NOMO2
Entrez Gene	283820(Human)
SwissProt	Q5JPE7(Human)

\*AREX continuously optimizes our products. Webpage content may not reflect the latest updates. For inquiries, please contact [info@arexbio.com](mailto:info@arexbio.com) or your local distributor.

\*Clone Number, Reactivity, Source/Host and Clonality can be found in the product name and Key Features section above.

**DATASHEET****NOMO2 Rabbit Polyclonal Antibody**

CAT. NO. APA16311

**DATA**

Western blot analysis of NOMO2 expression in BxPC3 (A) whole cell lysates. (Predicted band size: 122; 134; 139 kD; Observed band size: 139 kD)

**STORAGE**

Store at 4°C short term. For long term storage, store at -20°C, avoiding freeze/thaw cycles.

**NOTE**

For Research Use Only. Not for diagnostic, therapeutics, prophylactic or in vivo use.