

DATASHEET

Nova-1 Rabbit Polyclonal Antibody

CAT. NO. APA16313

KEY FEATURES

Target	Nova-1	Source / Host	Rabbit
Reactivity	Human	Clonality	Polyclonal
Applications	WB	Conjugation	Unconjugated
Form / Buffer	Liquid in 0.42% Potassium phosphate, 0.87% Sodium chloride, pH 7.3, 30% glycerol, and 0.01% sodium azide.		Storage at -20°C

BACKGROUND

RNA-binding protein which regulates alternative splicing of pre-mRNAs in the brain and spinal cord in a sequence-specific manner. Binds to 5'-YCA Y-3' repeats, with a minimum of 2 to 3 repeats necessary for high-affinity binding. Mediates both exon inclusion and exclusion, depending upon the position of its binding site within the pre-mRNA. Binding to 5'-YCA Y-3' clusters results in a local and asymmetric action to regulate spliceosome assembly. Binding to an exonic 5'-YCA Y-3' cluster changes the protein complexes assembled on pre-mRNA, blocking U1 small nuclear ribonucleoprotein (snRNP) binding and inhibiting exon inclusion, whereas binding to an intronic 5'-YCA Y-3' repeat enhances spliceosome assembly and favors exon inclusion.

APPLICATION

To ensure optimal assay performance, AREX recommends conducting reagent titration tailored to each testing system for optimal detection results.

WB	1:500 - 1:2000
----	----------------

*Results are sample-specific. Please refer to your local assay conditions and test parameters for reference.

PRODUCT OVERVIEW

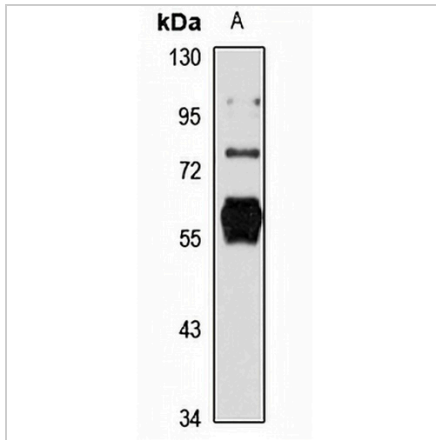
Description	Rabbit polyclonal antibody to Nova-1
Specificity	Recognizes endogenous levels of Nova-1 protein
Antibody Type	Primary antibody
Immunogen	Recombinant fusion protein of human Nova-1. The exact sequence is proprietary.
Purification	The antibody was purified by immunogen affinity chromatography.
Molecular Weight	Predicted: 19; Observed: 60 kD
Form/Buffer	Liquid in 0.42% Potassium phosphate, 0.87% Sodium chloride, pH 7.3, 30% glycerol, and 0.01% sodium azide.
Alternative Names	RNA-binding protein Nova-1; Neuro-oncological ventral antigen 1; Onconeural ventral antigen 1; Paraneoplastic Ri antigen; Ventral neuron-specific protein 1
Gene Symbol	NOVA1
Entrez Gene	4857(Human)
SwissProt	P51513(Human)

*AREX continuously optimizes our products. Webpage content may not reflect the latest updates. For inquiries, please contact info@arexbio.com or your local distributor.

*Clone Number, Reactivity, Source/Host and Clonality can be found in the product name and Key Features section above.

DATASHEET**Nova-1 Rabbit Polyclonal Antibody**

CAT. NO. APA16313

DATA

Western blot analysis of Nova-1 expression in SHSY5Y (A) whole cell lysates. (Predicted band size: 19; 49; 51; 52 kD; Observed band size: 60 kD)

STORAGE

Store at 4°C short term. For long term storage, store at -20°C, avoiding freeze/thaw cycles.

NOTE

For Research Use Only. Not for diagnostic, therapeutics, prophylactic or in vivo use.