

DATASHEET

NPC1L1 Rabbit Polyclonal Antibody

CAT. NO. APA16317

KEY FEATURES

Target	NPC1L1	Source / Host	Rabbit
Reactivity	Human	Clonality	Polyclonal
Applications	WB	Conjugation	Unconjugated
Form / Buffer	Liquid in 0.42% Potassium phosphate, 0.87% Sodium chloride, pH 7.3, 30% glycerol, and 0.01% sodium azide.		Storage at -20°C

BACKGROUND

Plays a major role in cholesterol homeostasis . Critical for the uptake of cholesterol across the plasma membrane of the intestinal enterocyte . Involved in plant sterol absorption, it transports sitosterol, although at lower rates than cholesterol . Is the direct molecular target of ezetimibe, a drug that inhibits cholesterol absorption and is approved for the treatment of hypercholesterolemia . May have a function in the transport of multiple lipids and their homeostasis, thereby influencing lipid metabolism regulation . May be involved in caveolin trafficking from the plasma membrane . In addition, acts as a negative regulator of NPC2 and down-regulates its expression and secretion by inhibiting its maturation and accelerating its degradation .

APPLICATION

To ensure optimal assay performance, AREX recommends conducting reagent titration tailored to each testing system for optimal detection results.

WB	1:500 - 1:2000
----	----------------

*Results are sample-specific. Please refer to your local assay conditions and test parameters for reference.

PRODUCT OVERVIEW

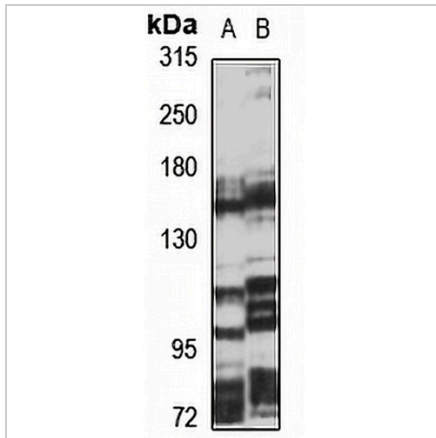
Description	Rabbit polyclonal antibody to NPC1L1
Specificity	Recognizes endogenous levels of NPC1L1 protein
Antibody Type	Primary antibody
Immunogen	Recombinant fusion protein of human NPC1L1. The exact sequence is proprietary.
Purification	The antibody was purified by immunogen affinity chromatography.
Molecular Weight	Predicted: 79; Observed: 148 kD
Form/Buffer	Liquid in 0.42% Potassium phosphate, 0.87% Sodium chloride, pH 7.3, 30% glycerol, and 0.01% sodium azide.
Alternative Names	Niemann-Pick C1-like protein 1
Gene Symbol	NPC1L1
Entrez Gene	29881(Human)
SwissProt	Q9UHC9(Human)

*AREX continuously optimizes our products. Webpage content may not reflect the latest updates. For inquiries, please contact info@arexbio.com or your local distributor.

*Clone Number, Reactivity, Source/Host and Clonality can be found in the product name and Key Features section above.

DATASHEET**NPC1L1 Rabbit Polyclonal Antibody**

CAT. NO. APA16317

DATA

Western blot analysis of NPC1L1 expression in HEK293T (A), K562 (B) whole cell lysates. (Predicted band size: 79; 140; 145; 148 kD; Observed band size: 148 kD)

STORAGE

Store at 4°C short term. For long term storage, store at -20°C, avoiding freeze/thaw cycles.

NOTE

For Research Use Only. Not for diagnostic, therapeutics, prophylactic or in vivo use.