

**DATASHEET**

**NPR1 Rabbit Polyclonal Antibody**

CAT. NO. APA16321

**KEY FEATURES**

Target	NPR1	Source / Host	Rabbit
Reactivity	Human, Mouse, Rat	Clonality	Polyclonal
Applications	WB	Conjugation	Unconjugated
Form / Buffer	Liquid in 0.42% Potassium phosphate, 0.87% Sodium chloride, pH 7.3, 30% glycerol, and 0.01% sodium azide.		Storage at -20°C

**BACKGROUND**

Receptor for the atrial natriuretic peptide NPPA/ANP and the brain natriuretic peptide NPPB/BNP which are potent vasoactive hormones playing a key role in cardiovascular homeostasis . Plays an essential role in the regulation of endothelial cell senescence and vascular aging . Upon activation by ANP or BNP, stimulates the production of cyclic guanosine monophosphate (cGMP) that promotes vascular tone and volume homeostasis by activation of protein kinase cGMP-dependent 1/PRKG1 and subsequently PRKAA1, thereby controlling blood pressure and maintaining cardiovascular homeostasis .

**APPLICATION**

To ensure optimal assay performance, AREX recommends conducting reagent titration tailored to each testing system for optimal detection results.

WB	1:500 - 1:2000
----	----------------

\*Results are sample-specific. Please refer to your local assay conditions and test parameters for reference.

**PRODUCT OVERVIEW**

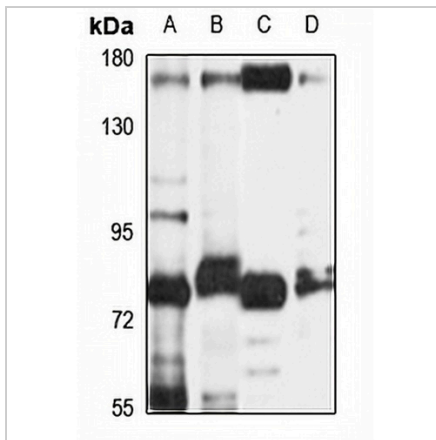
Description	Rabbit polyclonal antibody to NPR1
Specificity	Recognizes endogenous levels of NPR1 protein
Antibody Type	Primary antibody
Immunogen	Recombinant fusion protein of human NPR1. The exact sequence is proprietary.
Purification	The antibody was purified by immunogen affinity chromatography.
Molecular Weight	Predicted: 118 kD; Observed: 160 kD
Form/Buffer	Liquid in 0.42% Potassium phosphate, 0.87% Sodium chloride, pH 7.3, 30% glycerol, and 0.01% sodium azide.
Alternative Names	ANPRA; Atrial natriuretic peptide receptor 1; Atrial natriuretic peptide receptor type A; ANP-A; ANPR-A; NPR-A; Guanylate cyclase A; GC-A
Gene Symbol	NPR1
Entrez Gene	4881(Human); 18160(Mouse); 24603(Rat)
SwissProt	P16066(Human); P18293(Mouse); P18910(Rat)

\*AREX continuously optimizes our products. Webpage content may not reflect the latest updates. For inquiries, please contact [info@arexbio.com](mailto:info@arexbio.com) or your local distributor.

\*Clone Number, Reactivity, Source/Host and Clonality can be found in the product name and Key Features section above.

**DATASHEET****NPR1 Rabbit Polyclonal Antibody**

CAT. NO. APA16321

**DATA**

Western blot analysis of NPR1 expression in HepG2 (A), mouse lung (B), mouse liver (C), rat brain (D) whole cell lysates. (Predicted band size: 118 kD; Observed band size: 160 kD)

**STORAGE**

Store at 4°C short term. For long term storage, store at -20°C, avoiding freeze/thaw cycles.

**NOTE**

For Research Use Only. Not for diagnostic, therapeutics, prophylactic or in vivo use.