

DATASHEET

GPR154 Rabbit Polyclonal Antibody

CAT. NO. APA16323

KEY FEATURES

Target	GPR154	Source / Host	Rabbit
Reactivity	Human, Mouse, Rat	Clonality	Polyclonal
Applications	WB	Conjugation	Unconjugated
Form / Buffer	Liquid in 0.42% Potassium phosphate, 0.87% Sodium chloride, pH 7.3, 30% glycerol, and 0.01% sodium azide.		Storage at-20°C

BACKGROUND

G-protein coupled receptor for neuropeptide S (NPS) . Receptor activation by NPS initiates a G(q)/GNAQ-dependent phospholipase C-activating signaling pathway, resulting in Ca(2+) mobilization from intracellular stores and increased intracellular Ca(2+) levels . In addition to this pathway, NPS binding to its receptor activates cAMP/PKA signal transduction . Finally, both pathways converge to activate ERK1/ERK2 phosphorylation and signaling cascade . Inhibits cell growth in response to NPS binding .

APPLICATION

To ensure optimal assay performance, AREX recommends conducting reagent titration tailored to each testing system for optimal detection results.

WB	1:500 - 1:2000
----	----------------

*Results are sample-specific. Please refer to your local assay conditions and test parameters for reference.

PRODUCT OVERVIEW

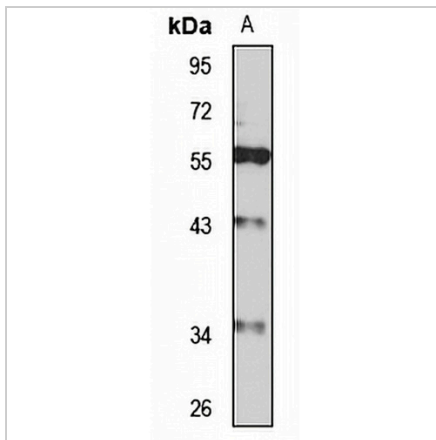
Description	Rabbit polyclonal antibody to GPR154
Specificity	Recognizes endogenous levels of GPR154 protein
Antibody Type	Primary antibody
Immunogen	KLH-conjugated synthetic peptide of human GPR154. The exact sequence is proprietary.
Purification	The antibody was purified by immunogen affinity chromatography.
Molecular Weight	Predicted: 10-18; Observed: 43 kD
Form/Buffer	Liquid in 0.42% Potassium phosphate, 0.87% Sodium chloride, pH 7.3, 30% glycerol, and 0.01% sodium azide.
Alternative Names	GPR154; GPRA; PGR14; Neuropeptide S receptor; G-protein coupled receptor 154; G-protein coupled receptor PGR14; G-protein coupled receptor for asthma susceptibility
Gene Symbol	NPSR1
Entrez Gene	387129(Human); 319239(Mouse)
SwissProt	Q6W5P4(Human); Q8BZP8(Mouse); P0COL6(Rat)

*AREX continuously optimizes our products. Webpage content may not reflect the latest updates. For inquiries, please contact info@arexbio.com or your local distributor.

*Clone Number, Reactivity, Source/Host and Clonality can be found in the product name and Key Features section above.

DATASHEET**GPR154 Rabbit Polyclonal Antibody**

CAT. NO. APA16323

DATA

Western blot analysis of GPR154 expression in HeLa (A) whole cell lysates. (Predicted band size: 10-18; 35-44 kD; Observed band size: 43 kD)

STORAGE

Store at 4°C short term. For long term storage, store at -20°C, avoiding freeze/thaw cycles.

NOTE

For Research Use Only. Not for diagnostic, therapeutics, prophylactic or in vivo use.