

DATASHEET

LXR beta Rabbit Polyclonal Antibody

CAT. NO. APA16326

KEY FEATURES

Target	LXR beta	Source / Host	Rabbit
Reactivity	Human, Mouse, Rat	Clonality	Polyclonal
Applications	WB	Conjugation	Unconjugated
Form / Buffer	Liquid in 0.42% Potassium phosphate, 0.87% Sodium chloride, pH 7.3, 30% glycerol, and 0.01% sodium azide.		Storage at -20°C

BACKGROUND

Nuclear receptor that exhibits a ligand-dependent transcriptional activation activity . Binds preferentially to double-stranded oligonucleotide direct repeats having the consensus half-site sequence 5'-AGGTCA-3' and 4-nt spacing (DR-4). Regulates cholesterol uptake through MYLIP-dependent ubiquitination of LDLR, VLDLR and LRP8; DLDLR and LRP8. Interplays functionally with RORA for the regulation of genes involved in liver metabolism . Induces LPCAT3-dependent phospholipid remodeling in endoplasmic reticulum (ER) membranes of hepatocytes, driving SREBF1 processing and lipogenesis .

APPLICATION

To ensure optimal assay performance, AREX recommends conducting reagent titration tailored to each testing system for optimal detection results.

WB	1:500 - 1:2000
----	----------------

*Results are sample-specific. Please refer to your local assay conditions and test parameters for reference.

PRODUCT OVERVIEW

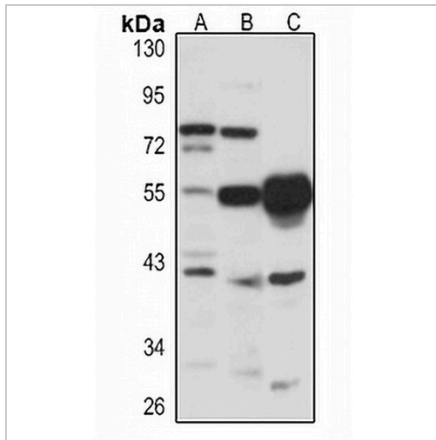
Description	Rabbit polyclonal antibody to LXR beta
Specificity	Recognizes endogenous levels of LXR beta protein
Antibody Type	Primary antibody
Immunogen	KLH-conjugated synthetic peptide of human LXR beta. The exact sequence is proprietary.
Purification	The antibody was purified by immunogen affinity chromatography.
Molecular Weight	Predicted: 39; Observed: 51 kD
Form/Buffer	Liquid in 0.42% Potassium phosphate, 0.87% Sodium chloride, pH 7.3, 30% glycerol, and 0.01% sodium azide.
Alternative Names	LXRB; NER; UNR; Oxysterols receptor LXR-beta; Liver X receptor beta; Nuclear receptor NER; Nuclear receptor subfamily 1 group H member 2; Ubiquitously-expressed nuclear receptor
Gene Symbol	NR1H2
Entrez Gene	7376(Human); 22260(Mouse); 58851(Rat)
SwissProt	P55055(Human); Q60644(Mouse); Q62755(Rat)

*AREX continuously optimizes our products. Webpage content may not reflect the latest updates. For inquiries, please contact info@arexbio.com or your local distributor.

*Clone Number, Reactivity, Source/Host and Clonality can be found in the product name and Key Features section above.

DATASHEET**LXR beta Rabbit Polyclonal Antibody**

CAT. NO. APA16326

DATA

Western blot analysis of LXR beta expression in A431 (A), mouse liver (B), rat brain (C) whole cell lysates. (Predicted band size: 39; 50 kD; Observed band size: 51 kD)

STORAGE

Store at 4°C short term. For long term storage, store at -20°C, avoiding freeze/thaw cycles.

NOTE

For Research Use Only. Not for diagnostic, therapeutics, prophylactic or in vivo use.