

DATASHEET

Neurexin 1 beta Rabbit Polyclonal Antibody

CAT. NO. APA16332

KEY FEATURES

Target	Neurexin 1 beta	Source / Host	Rabbit
Reactivity	Human, Mouse, Rat	Clonality	Polyclonal
Applications	WB	Conjugation	Unconjugated
Form / Buffer	Liquid in 0.42% Potassium phosphate, 0.87% Sodium chloride, pH 7.3, 30% glycerol, and 0.01% sodium azide.		Storage at -20°C

BACKGROUND

Neuronal cell surface protein involved in cell recognition and cell adhesion by forming intracellular junctions through binding to neuroligins . Plays a role in formation of synaptic junctions . Functions as part of a trans-synaptic complex by binding to cerebellins and postsynaptic GRID1. This interaction helps regulate the activity of NMDA and AMPA receptors at hippocampal synapses without affecting synapse formation. NRXN1B-CBLN2-GRID1 complex transduce presynaptic signals into postsynaptic NMDAR response .

APPLICATION

To ensure optimal assay performance, AREX recommends conducting reagent titration tailored to each testing system for optimal detection results.

WB	1:500 - 1:2000
----	----------------

*Results are sample-specific. Please refer to your local assay conditions and test parameters for reference.

PRODUCT OVERVIEW

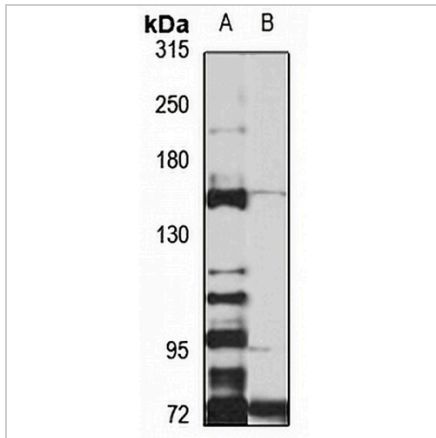
Description	Rabbit polyclonal antibody to Neurexin 1 beta
Specificity	Recognizes endogenous levels of Neurexin 1 beta protein
Antibody Type	Primary antibody
Immunogen	Recombinant fusion protein of human Neurexin 1 beta. The exact sequence is proprietary.
Purification	The antibody was purified by immunogen affinity chromatography.
Molecular Weight	Predicted: 15; Observed: 162 kD
Form/Buffer	Liquid in 0.42% Potassium phosphate, 0.87% Sodium chloride, pH 7.3, 30% glycerol, and 0.01% sodium azide.
Alternative Names	Neurexin-1-beta; Neurexin I-beta
Gene Symbol	NRXN1
Entrez Gene	9378(Human); 18189(Mouse); 60391(Rat)
SwissProt	P58400(Human); P0DI97(Mouse); Q63373(Rat)

*AREX continuously optimizes our products. Webpage content may not reflect the latest updates. For inquiries, please contact info@arexbio.com or your local distributor.

*Clone Number, Reactivity, Source/Host and Clonality can be found in the product name and Key Features section above.

DATASHEET**Neurexin 1 beta Rabbit Polyclonal Antibody**

CAT. NO. APA16332

DATA

Western blot analysis of Neurexin 1 beta expression in HepG2 (A), mouse liver (B) whole cell lysates. (Predicted band size: 15; 46; 161; 164; 169 kD; Observed band size: 162 kD)

STORAGE

Store at 4°C short term. For long term storage, store at -20°C, avoiding freeze/thaw cycles.

NOTE

For Research Use Only. Not for diagnostic, therapeutics, prophylactic or in vivo use.