

## DATASHEET

# NT5C3 Rabbit Polyclonal Antibody

CAT. NO. APA16338

### KEY FEATURES

|               |   |               |                     |
|---------------|---|---------------|---------------------|
| Target        | NT5C3   | Source / Host | Rabbit              |
| Reactivity    | Mouse, Rat  | Clonality     | Polyclonal          |
| Applications  | WB  | Conjugation   | Unconjugated        |
| Form / Buffer | Liquid in 0.42% Potassium phosphate, 0.87% Sodium chloride, pH 7.3, 30% glycerol, and 0.01% sodium azide. |               | Storage<br>at -20°C |

### BACKGROUND

Nucleotidase which shows specific activity towards cytidine monophosphate (CMP) and 7-methylguanosine monophosphate (m(7)GMP) and 7-methylguanosine monophosphate (m(7)GMP) . CMP seems to be the preferred substrate .

### APPLICATION

To ensure optimal assay performance, AREX recommends conducting reagent titration tailored to each testing system for optimal detection results.

|    |                |
|----|----------------|
| WB | 1:500 - 1:2000 |
|----|----------------|

\*Results are sample-specific. Please refer to your local assay conditions and test parameters for reference.

### PRODUCT OVERVIEW

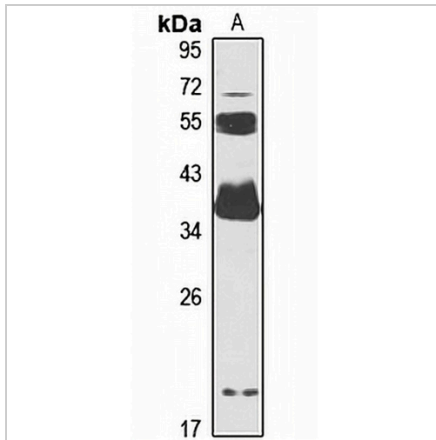
|                   |  |
|-------------------|--|
| Description       | Rabbit polyclonal antibody to NT5C3  |
| Specificity       | Recognizes endogenous levels of NT5C3 protein  |
| Antibody Type     | Primary antibody   |
| Immunogen         | Recombinant fusion protein of human NT5C3. The exact sequence is proprietary.  |
| Purification      | The antibody was purified by immunogen affinity chromatography.  |
| Molecular Weight  | Predicted: 32; Observed: 38 kD   |
| Form/Buffer       | Liquid in 0.42% Potassium phosphate, 0.87% Sodium chloride, pH 7.3, 30% glycerol, and 0.01% sodium azide.  |
| Alternative Names | NT5C3; P5N1; UMPH1; Cytosolic 5'-nucleotidase 3A; Cytosolic 5'-nucleotidase 3; Cytosolic 5'-nucleotidase III; cN-III; Pyrimidine 5'-nucleotidase 1; P5'N-1; P5N-1; PN-I; Uridine 5'-monophosphate hydrolase 1; p36 |
| Gene Symbol       | NT5C3A   |
| Entrez Gene       | 51251(Human); 107569(Mouse)  |
| SwissProt         | Q9H0P0(Human); Q9D020(Mouse)   |

\*AREX continuously optimizes our products. Webpage content may not reflect the latest updates. For inquiries, please contact [info@arexbio.com](mailto:info@arexbio.com) or your local distributor.

\*Clone Number, Reactivity, Source/Host and Clonality can be found in the product name and Key Features section above.

**DATASHEET****NT5C3 Rabbit Polyclonal Antibody**

CAT. NO. APA16338

**DATA**

Western blot analysis of NT5C3 expression in mouse heart (A) whole cell lysates.  
(Predicted band size: 32; 33; 37 kD; Observed band size: 38 kD)

**STORAGE**

Store at 4°C short term. For long term storage, store at -20°C, avoiding freeze/thaw cycles.

**NOTE**

For Research Use Only. Not for diagnostic, therapeutics, prophylactic or in vivo use.