

**DATASHEET**

**NUP50 Rabbit Polyclonal Antibody**

CAT. NO. APA16356

**KEY FEATURES**

Target	NUP50	Source / Host	Rabbit
Reactivity	Human, Mouse, Rat	Clonality	Polyclonal
Applications	WB, IHC	Conjugation	Unconjugated
Form / Buffer	Liquid in 0.42% Potassium phosphate, 0.87% Sodium chloride, pH 7.3, 30% glycerol, and 0.01% sodium azide.		Storage at-20°C

**BACKGROUND**

Component of the nuclear pore complex that has a direct role in nuclear protein import . Actively displaces NLSs from importin-alpha, and facilitates disassembly of the importin-alpha:beta-cargo complex and importin recycling . Interacts with regulatory proteins of cell cycle progression including CDKN1B . This interaction is required for correct intracellular transport and degradation of CDKN1B .

**APPLICATION**

To ensure optimal assay performance, AREX recommends conducting reagent titration tailored to each testing system for optimal detection results.

WB	1:500 - 1:2000
IHC	1:50 - 1:200

\*Results are sample-specific. Please refer to your local assay conditions and test parameters for reference.

**PRODUCT OVERVIEW**

Description	Rabbit polyclonal antibody to NUP50
Specificity	Recognizes endogenous levels of NUP50 protein
Antibody Type	Primary antibody
Immunogen	Recombinant fusion protein of human NUP50. The exact sequence is proprietary.
Purification	The antibody was purified by immunogen affinity chromatography.
Molecular Weight	Predicted: 46; Observed: 50 kD
Form/Buffer	Liquid in 0.42% Potassium phosphate, 0.87% Sodium chloride, pH 7.3, 30% glycerol, and 0.01% sodium azide.
Alternative Names	NPAP60L; Nuclear pore complex protein Nup50; 50 kDa nucleoporin; Nuclear pore-associated protein 60 kDa-like; Nucleoporin Nup50
Gene Symbol	NUP50
Entrez Gene	10762(Human); 18141(Mouse); 25497(Rat)
SwissProt	Q9UKX7(Human); Q9JIH2(Mouse); O08587(Rat)

\*AREX continuously optimizes our products. Webpage content may not reflect the latest updates. For inquiries, please contact [info@arex.bio](mailto:info@arex.bio) or your local distributor.

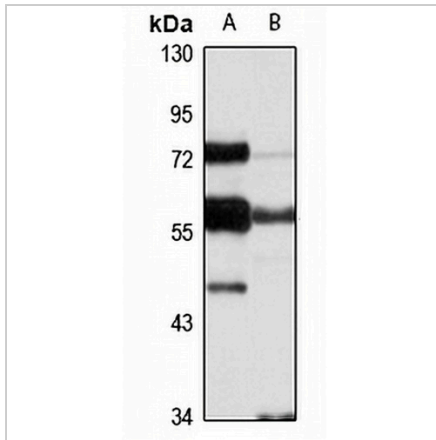
\*Clone Number, Reactivity, Source/Host and Clonality can be found in the product name and Key Features section above.

**DATASHEET**

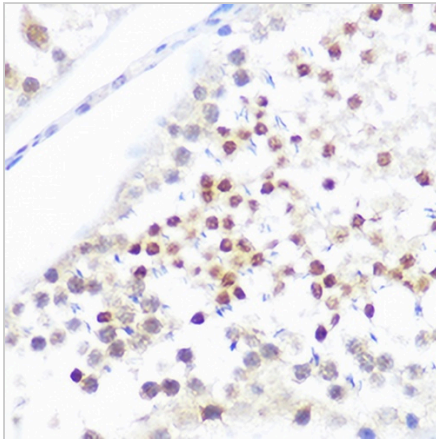
**NUP50 Rabbit Polyclonal Antibody**

CAT. NO. APA16356

**DATA**



Western blot analysis of NUP50 expression in HeLa (A), mouse thymus (B) whole cell lysates. (Predicted band size: 46; 50 kD; Observed band size: 50 kD)



Immunohistochemical analysis of NUP50 staining in rat testis formalin fixed paraffin embedded tissue section. The section was pre-treated using heat mediated antigen retrieval with sodium citrate buffer (pH 6.0). The section was then incubated with the antibody at room temperature and detected using an HRP conjugated compact polymer system. DAB was used as the chromogen. The section was then counterstained with haematoxylin and mounted with DPX.

**STORAGE**

Store at 4°C short term. For long term storage, store at -20°C, avoiding freeze/thaw cycles.

**NOTE**

For Research Use Only. Not for diagnostic, therapeutics, prophylactic or in vivo use.