

**DATASHEET**

**NUPL2 Rabbit Polyclonal Antibody**

CAT. NO. APA16359

**KEY FEATURES**

Target	NUPL2	Source / Host	Rabbit
Reactivity	Human	Clonality	Polyclonal
Applications	WB	Conjugation	Unconjugated
Form / Buffer	Liquid in 0.42% Potassium phosphate, 0.87% Sodium chloride, pH 7.3, 30% glycerol, and 0.01% sodium azide.		Storage at -20°C

**BACKGROUND**

Required for the export of mRNAs containing poly(A) tails from the nucleus into the cytoplasm.

**APPLICATION**

To ensure optimal assay performance, AREX recommends conducting reagent titration tailored to each testing system for optimal detection results.

WB	1:500 - 1:2000
----	----------------

\*Results are sample-specific. Please refer to your local assay conditions and test parameters for reference.

**PRODUCT OVERVIEW**

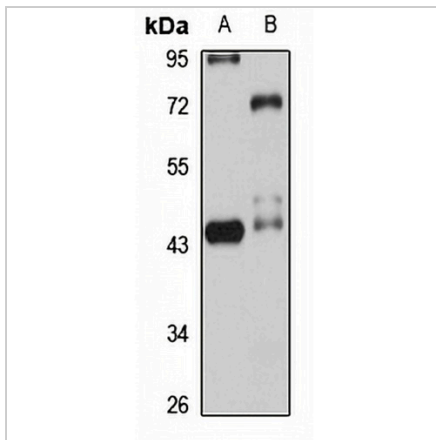
Description	Rabbit polyclonal antibody to NUPL2
Specificity	Recognizes endogenous levels of NUPL2 protein
Antibody Type	Primary antibody
Immunogen	Recombinant fusion protein of human NUPL2. The exact sequence is proprietary.
Purification	The antibody was purified by immunogen affinity chromatography.
Molecular Weight	Predicted: 19; Observed: 45 kD
Form/Buffer	Liquid in 0.42% Potassium phosphate, 0.87% Sodium chloride, pH 7.3, 30% glycerol, and 0.01% sodium azide.
Alternative Names	CG1; Nucleoporin-like protein 2; NLP-1; NUP42 homolog; Nucleoporin hCG1
Gene Symbol	NUPL2
Entrez Gene	11097(Human)
SwissProt	O15504(Human)

\*AREX continuously optimizes our products. Webpage content may not reflect the latest updates. For inquiries, please contact [info@arexbio.com](mailto:info@arexbio.com) or your local distributor.

\*Clone Number, Reactivity, Source/Host and Clonality can be found in the product name and Key Features section above.

**DATASHEET****NUPL2 Rabbit Polyclonal Antibody**

CAT. NO. APA16359

**DATA**

Western blot analysis of NUPL2 expression in A549 (A), A431 (B) whole cell lysates. (Predicted band size: 19; 25; 44 kD; Observed band size: 45 kD)

**STORAGE**

Store at 4°C short term. For long term storage, store at -20°C, avoiding freeze/thaw cycles.

**NOTE**

For Research Use Only. Not for diagnostic, therapeutics, prophylactic or in vivo use.