

DATASHEET

ODF1 Rabbit Polyclonal Antibody

CAT. NO. APA16364

KEY FEATURES

| | | | |
|---------------|---|---------------|---------------------|
| Target | ODF1 | Source / Host | Rabbit |
| Reactivity | Human, Mouse, Rat | Clonality | Polyclonal |
| Applications | WB | Conjugation | Unconjugated |
| Form / Buffer | Liquid in 0.42% Potassium phosphate, 0.87% Sodium chloride, pH 7.3, 30% glycerol, and 0.01% sodium azide. | | Storage at -20°C |

BACKGROUND

Component of the outer dense fibers (ODF) of spermatozoa. ODF are filamentous structures located on the outside of the axoneme in the midpiece and principal piece of the mammalian sperm tail and may help to maintain the passive elastic structures and elastic recoil of the sperm tail.

APPLICATION

To ensure optimal assay performance, AREX recommends conducting reagent titration tailored to each testing system for optimal detection results.

| | |
|----|----------------|
| WB | 1:500 - 1:2000 |
|----|----------------|

*Results are sample-specific. Please refer to your local assay conditions and test parameters for reference.

PRODUCT OVERVIEW

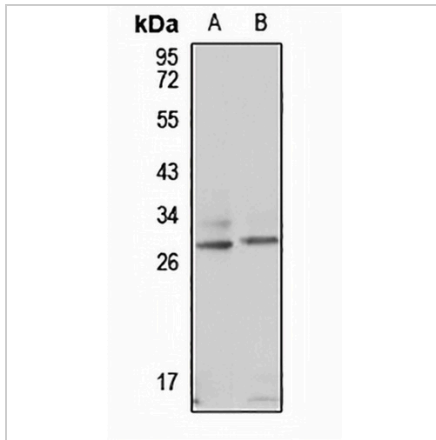
| | |
|-------------------|---|
| Description | Rabbit polyclonal antibody to ODF1 |
| Specificity | Recognizes endogenous levels of ODF1 protein |
| Antibody Type | Primary antibody |
| Immunogen | Recombinant fusion protein of human ODF1. The exact sequence is proprietary. |
| Purification | The antibody was purified by immunogen affinity chromatography. |
| Molecular Weight | Predicted: 28 kD; Observed: 28 kD |
| Form/Buffer | Liquid in 0.42% Potassium phosphate, 0.87% Sodium chloride, pH 7.3, 30% glycerol, and 0.01% sodium azide. |
| Alternative Names | ODFP; Outer dense fiber protein 1 |
| Gene Symbol | ODF1 |
| Entrez Gene | 4956(Human); 24610(Rat) |
| SwissProt | Q14990(Human); Q61999(Mouse); P21769(Rat) |

*AREX continuously optimizes our products. Webpage content may not reflect the latest updates. For inquiries, please contact info@arexbio.com or your local distributor.

*Clone Number, Reactivity, Source/Host and Clonality can be found in the product name and Key Features section above.

DATASHEET**ODF1 Rabbit Polyclonal Antibody**

CAT. NO. APA16364

DATA

Western blot analysis of ODF1 expression in mouse testis (A), rat testis (B) whole cell lysates. (Predicted band size: 28 kD; Observed band size: 28 kD)

STORAGE

Store at 4°C short term. For long term storage, store at -20°C, avoiding freeze/thaw cycles.

NOTE

For Research Use Only. Not for diagnostic, therapeutics, prophylactic or in vivo use.