

DATASHEET

OLFM3 Rabbit Polyclonal Antibody

CAT. NO. APA16367

KEY FEATURES

Target	OLFM3	Source / Host	Rabbit
Reactivity	Human, Mouse, Rat	Clonality	Polyclonal
Applications	WB	Conjugation	Unconjugated
Form / Buffer	Liquid in 0.42% Potassium phosphate, 0.87% Sodium chloride, pH 7.3, 30% glycerol, and 0.01% sodium azide.		Storage at -20°C

BACKGROUND

Noelin-3 (OLFM3), also known as Olfactomedin-3, Optimedlin. Subunit: Peripherally associated with AMPAR complex. AMPAR complex consists of an inner core made of 4 pore-forming GluA/GRIA proteins (GRIA1, GRIA2, GRIA3 and GRIA4) and 4 major auxiliary subunits arranged in a twofold symmetry. One of the two pairs of distinct binding sites is occupied either by CNIH2, CNIH3 or CACNG2, CACNG3. The other harbors CACNG2, CACNG3, CACNG4, CACNG8 or GSG1L. This inner core of AMPAR complex is complemented by outer core constituents binding directly to the GluA/GRIA proteins at sites distinct from the interaction sites of the inner core constituents. Outer core constituents include at least PRRT1, PRRT2, CKAMP44/SHISA9, FRRS1L and NRN1.

APPLICATION

To ensure optimal assay performance, AREX recommends conducting reagent titration tailored to each testing system for optimal detection results.

WB	1:500 - 1:2000
----	----------------

*Results are sample-specific. Please refer to your local assay conditions and test parameters for reference.

PRODUCT OVERVIEW

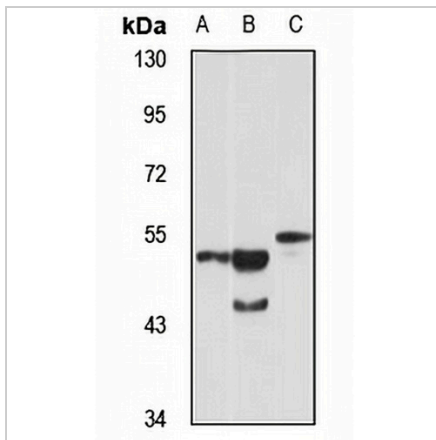
Description	Rabbit polyclonal antibody to OLFM3
Specificity	Recognizes endogenous levels of OLFM3 protein
Antibody Type	Primary antibody
Immunogen	Recombinant fusion protein of human OLFM3. The exact sequence is proprietary.
Purification	The antibody was purified by immunogen affinity chromatography.
Molecular Weight	Predicted: 54 kD; Observed: 53 kD
Form/Buffer	Liquid in 0.42% Potassium phosphate, 0.87% Sodium chloride, pH 7.3, 30% glycerol, and 0.01% sodium azide.
Alternative Names	NOE3; Noelin-3; Olfactomedin-3; Optimedlin
Gene Symbol	OLFM3
Entrez Gene	118427(Human); 229759(Mouse); 252920(Rat)
SwissProt	Q96PB7(Human); P63056(Mouse); P63057(Rat)

*AREX continuously optimizes our products. Webpage content may not reflect the latest updates. For inquiries, please contact info@arexbio.com or your local distributor.

*Clone Number, Reactivity, Source/Host and Clonality can be found in the product name and Key Features section above.

DATASHEET**OLFM3 Rabbit Polyclonal Antibody**

CAT. NO. APA16367

DATA

Western blot analysis of OLFM3 expression in PC3 (A), mouse brain (B), rat eye (C) whole cell lysates. (Predicted band size: 54 kD; Observed band size: 53 kD)

STORAGE

Store at 4°C short term. For long term storage, store at -20°C, avoiding freeze/thaw cycles.

NOTE

For Research Use Only. Not for diagnostic, therapeutics, prophylactic or in vivo use.