

DATASHEET

OLFM4 Rabbit Polyclonal Antibody

CAT. NO. APA16368

KEY FEATURES

Target	OLFM4	Source / Host	Rabbit
Reactivity	Human, Mouse, Rat	Clonality	Polyclonal
Applications	WB	Conjugation	Unconjugated
Form / Buffer	Liquid in 0.42% Potassium phosphate, 0.87% Sodium chloride, pH 7.3, 30% glycerol, and 0.01% sodium azide.		Storage at -20°C

BACKGROUND

May promote proliferation of pancreatic cancer cells by favoring the transition from the S to G2/M phase. In myeloid leukemic cell lines, inhibits cell growth and induces cell differentiation and apoptosis. May play a role in the inhibition of EIF4EBP1 phosphorylation/deactivation. Facilitates cell adhesion, most probably through interaction with cell surface lectins and cadherin.

APPLICATION

To ensure optimal assay performance, AREX recommends conducting reagent titration tailored to each testing system for optimal detection results.

WB	1:500 - 1:2000
----	----------------

*Results are sample-specific. Please refer to your local assay conditions and test parameters for reference.

PRODUCT OVERVIEW

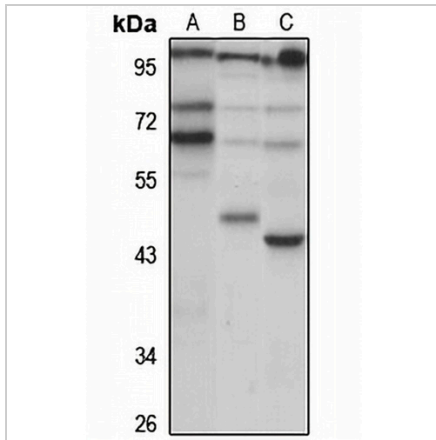
Description	Rabbit polyclonal antibody to OLFM4
Specificity	Recognizes endogenous levels of OLFM4 protein
Antibody Type	Primary antibody
Immunogen	Recombinant fusion protein of human OLFM4. The exact sequence is proprietary.
Purification	The antibody was purified by immunogen affinity chromatography.
Molecular Weight	Predicted: 57 kD; Observed: 75-80 kD
Form/Buffer	Liquid in 0.42% Potassium phosphate, 0.87% Sodium chloride, pH 7.3, 30% glycerol, and 0.01% sodium azide.
Alternative Names	GW112; Olfactomedin-4; OLM4; Antiapoptotic protein GW112; G-CSF-stimulated clone 1 protein; hGC-1; hOLF4
Gene Symbol	OLFM4
Entrez Gene	10562(Human)
SwissProt	Q6UX06(Human); Q3UZZ4(Mouse)

*AREX continuously optimizes our products. Webpage content may not reflect the latest updates. For inquiries, please contact info@arexbio.com or your local distributor.

*Clone Number, Reactivity, Source/Host and Clonality can be found in the product name and Key Features section above.

DATASHEET**OLFM4 Rabbit Polyclonal Antibody**

CAT. NO. APA16368

DATA

Western blot analysis of OLFM4 expression in K562 (A), mouse pancreas (B), rat pancreas (C) whole cell lysates. (Predicted band size: 57 kD; Observed band size: 75-80 kD)

STORAGE

Store at 4°C short term. For long term storage, store at -20°C, avoiding freeze/thaw cycles.

NOTE

For Research Use Only. Not for diagnostic, therapeutics, prophylactic or in vivo use.