

DATASHEET

Oma1 Rabbit Polyclonal Antibody

CAT. NO. APA16369

KEY FEATURES

Target	Oma1	Source / Host	Rabbit
Reactivity	Human, Mouse, Rat	Clonality	Polyclonal
Applications	WB	Conjugation	Unconjugated
Form / Buffer	Liquid in 0.42% Potassium phosphate, 0.87% Sodium chloride, pH 7.3, 30% glycerol, and 0.01% sodium azide.		Storage at-20°C

BACKGROUND

Metalloprotease that is part of the quality control system in the inner membrane of mitochondria . Activated in response to various mitochondrial stress, leading to the proteolytic cleavage of target proteins, such as OPA1, UQCC3 and DELE1 . Involved in the fusion of the mitochondrial inner membranes by mediating cleavage of OPA1 at S1 position, generating the soluble OPA1 (S-OPA1), which cooperates with the membrane form (L-OPA1) to coordinate the fusion of mitochondrial inner membranes . Following stress conditions that induce loss of mitochondrial membrane potential, mediates cleavage of OPA1, leading to excess production of soluble OPA1 (S-OPA1) and negative regulation of mitochondrial fusion .

APPLICATION

To ensure optimal assay performance, AREX recommends conducting reagent titration tailored to each testing system for optimal detection results.

WB	1:500 - 1:2000
----	----------------

*Results are sample-specific. Please refer to your local assay conditions and test parameters for reference.

PRODUCT OVERVIEW

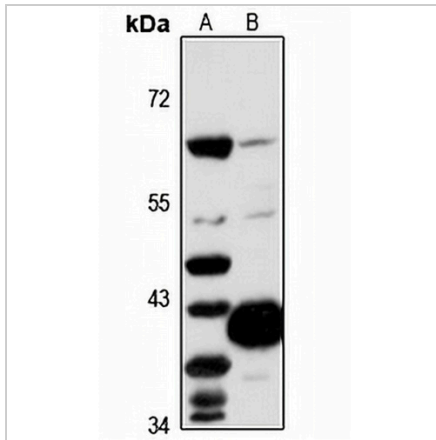
Description	Rabbit polyclonal antibody to Oma1
Specificity	Recognizes endogenous levels of Oma1 protein
Antibody Type	Primary antibody
Immunogen	Recombinant fusion protein of human Oma1. The exact sequence is proprietary.
Purification	The antibody was purified by immunogen affinity chromatography.
Molecular Weight	Predicted: 55; Observed: 60 kD
Form/Buffer	Liquid in 0.42% Potassium phosphate, 0.87% Sodium chloride, pH 7.3, 30% glycerol, and 0.01% sodium azide.
Alternative Names	MPRP1; Metalloendopeptidase OMA1 mitochondrial; Metalloprotease-related protein 1; MPRP-1; Overlapping with the m-AAA protease 1 homolog
Gene Symbol	OMA1
Entrez Gene	115209(Human); 67013(Mouse); 298282(Rat)
SwissProt	Q96E52(Human); Q9D8H7(Mouse); D3ZS74(Rat)

*AREX continuously optimizes our products. Webpage content may not reflect the latest updates. For inquiries, please contact info@arexbio.com or your local distributor.

*Clone Number, Reactivity, Source/Host and Clonality can be found in the product name and Key Features section above.

DATASHEET**Oma1 Rabbit Polyclonal Antibody**

CAT. NO. APA16369

DATA

Western blot analysis of Oma1 expression in K562 (A), mouse liver (B) whole cell lysates.
(Predicted band size: 55; 60 kD; Observed band size: 60 kD)

STORAGE

Store at 4°C short term. For long term storage, store at -20°C, avoiding freeze/thaw cycles.

NOTE

For Research Use Only. Not for diagnostic, therapeutics, prophylactic or in vivo use.