

**DATASHEET**

**OKL38 Rabbit Polyclonal Antibody**

CAT. NO. APA16381

**KEY FEATURES**

Target	OKL38	Source / Host	Rabbit
Reactivity	Human, Mouse, Rat	Clonality	Polyclonal
Applications	WB	Conjugation	Unconjugated
Form / Buffer	Liquid in 0.42% Potassium phosphate, 0.87% Sodium chloride, pH 7.3, 30% glycerol, and 0.01% sodium azide.		Storage at -20°C

**BACKGROUND**

Monoxygenase catalytic activity . Involved in regulation of cytokinesis; promotes RHOA activity, probably acting locally at the midbody in late cytokinesis . Monoxygenase activity is involved in stabilizing transient structures between daughter cells, termed intercellular bridges, before abscission . Regulates differentiation and proliferation through the regulation of cell death .

**APPLICATION**

To ensure optimal assay performance, AREX recommends conducting reagent titration tailored to each testing system for optimal detection results.

WB	1:500 - 1:2000
----	----------------

\*Results are sample-specific. Please refer to your local assay conditions and test parameters for reference.

**PRODUCT OVERVIEW**

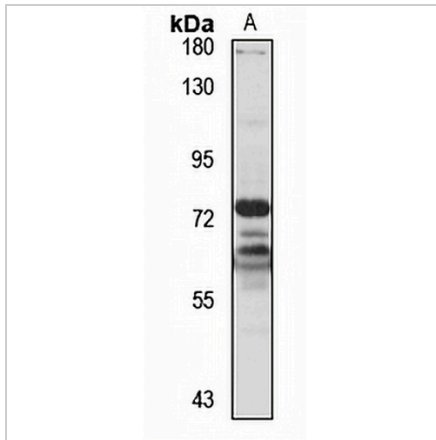
Description	Rabbit polyclonal antibody to OKL38
Specificity	Recognizes endogenous levels of OKL38 protein
Antibody Type	Primary antibody
Immunogen	Recombinant fusion protein of human OKL38. The exact sequence is proprietary.
Purification	The antibody was purified by immunogen affinity chromatography.
Molecular Weight	Predicted: 51; Observed: 75 kD
Form/Buffer	Liquid in 0.42% Potassium phosphate, 0.87% Sodium chloride, pH 7.3, 30% glycerol, and 0.01% sodium azide.
Alternative Names	OKL38; Oxidative stress-induced growth inhibitor 1; Ovary kidney and liver protein 38; huOKL38; Pregnancy-induced growth inhibitor OKL38
Gene Symbol	OSGIN1
Entrez Gene	29948(Human)
SwissProt	Q9UJX0(Human)

\*AREX continuously optimizes our products. Webpage content may not reflect the latest updates. For inquiries, please contact [info@arexbio.com](mailto:info@arexbio.com) or your local distributor.

\*Clone Number, Reactivity, Source/Host and Clonality can be found in the product name and Key Features section above.

**DATASHEET****OKL38 Rabbit Polyclonal Antibody**

CAT. NO. APA16381

**DATA**

Western blot analysis of OKL38 expression in HEK293T (A) whole cell lysates. (Predicted band size: 51; 60 kD; Observed band size: 75 kD)

**STORAGE**

Store at 4°C short term. For long term storage, store at -20°C, avoiding freeze/thaw cycles.

**NOTE**

For Research Use Only. Not for diagnostic, therapeutics, prophylactic or in vivo use.