

## DATASHEET

# OTUD6B Rabbit Polyclonal Antibody

CAT. NO. APA16386

### KEY FEATURES

|               |   |               |                    |
|---------------|---|---------------|--------------------|
| Target        | OTUD6B  | Source / Host | Rabbit             |
| Reactivity    | Human, Mouse, Rat   | Clonality     | Polyclonal         |
| Applications  | WB, IP  | Conjugation   | Unconjugated       |
| Form / Buffer | Liquid in 0.42% Potassium phosphate, 0.87% Sodium chloride, pH 7.3, 30% glycerol, and 0.01% sodium azide. |               | Storage<br>at-20°C |

### BACKGROUND

Deubiquitinating enzyme that may play a role in the ubiquitin-dependent regulation of protein synthesis, downstream of mTORC1 . May associate with the protein synthesis initiation complex and modify its ubiquitination to repress translation . May also repress DNA synthesis and modify different cellular targets thereby regulating cell growth and proliferation . May also play a role in proteasome assembly and function .

### APPLICATION

To ensure optimal assay performance, AREX recommends conducting reagent titration tailored to each testing system for optimal detection results.

|    |                |
|----|----------------|
| WB | 1:500 - 1:2000 |
| IP | 1:20 - 1:100   |

\*Results are sample-specific. Please refer to your local assay conditions and test parameters for reference.

### PRODUCT OVERVIEW

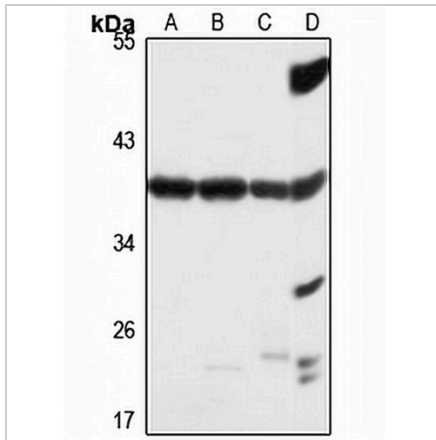
|                   |   |
|-------------------|---|
| Description       | Rabbit polyclonal antibody to OTUD6B  |
| Specificity       | Recognizes endogenous levels of OTUD6B protein  |
| Antibody Type     | Primary antibody  |
| Immunogen         | Recombinant fusion protein of human OTUD6B. The exact sequence is proprietary.                            |
| Purification      | The antibody was purified by immunogen affinity chromatography.   |
| Molecular Weight  | Predicted: 21; Observed: 38 kD  |
| Form/Buffer       | Liquid in 0.42% Potassium phosphate, 0.87% Sodium chloride, pH 7.3, 30% glycerol, and 0.01% sodium azide. |
| Alternative Names | DUBA5; OTU domain-containing protein 6B; DUBA-5   |
| Gene Symbol       | OTUD6B  |
| Entrez Gene       | 51633(Human); 72201(Mouse)  |
| SwissProt         | Q8N6M0(Human); Q8K2H2(Mouse)  |

\*AREX continuously optimizes our products. Webpage content may not reflect the latest updates. For inquiries, please contact [info@arexbio.com](mailto:info@arexbio.com) or your local distributor.

\*Clone Number, Reactivity, Source/Host and Clonality can be found in the product name and Key Features section above.

**DATASHEET****OTUD6B Rabbit Polyclonal Antibody**

CAT. NO. APA16386

**DATA**

Western blot analysis of OTUD6B expression in HEK293T (A), A431 (B), mouse heart (C), rat liver (D) whole cell lysates. (Predicted band size: 21; 33 kD; Observed band size: 38 kD)

**STORAGE**

Store at 4°C short term. For long term storage, store at -20°C, avoiding freeze/thaw cycles.

**NOTE**

For Research Use Only. Not for diagnostic, therapeutics, prophylactic or in vivo use.