

DATASHEET

OXSM Rabbit Polyclonal Antibody

CAT. NO. APA16391

KEY FEATURES

Target	OXSM	Source / Host	Rabbit
Reactivity	Human, Mouse, Rat	Clonality	Polyclonal
Applications	WB	Conjugation	Unconjugated
Form / Buffer	Liquid in 0.42% Potassium phosphate, 0.87% Sodium chloride, pH 7.3, 30% glycerol, and 0.01% sodium azide.		Storage at -20°C

BACKGROUND

May play a role in the biosynthesis of lipoic acid as well as longer chain fatty acids required for optimal mitochondrial function.

APPLICATION

To ensure optimal assay performance, AREX recommends conducting reagent titration tailored to each testing system for optimal detection results.

WB	1:500 - 1:2000
----	----------------

*Results are sample-specific. Please refer to your local assay conditions and test parameters for reference.

PRODUCT OVERVIEW

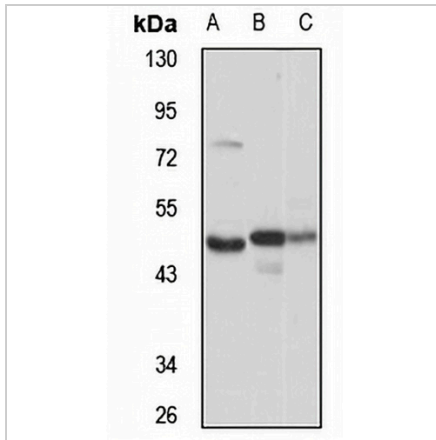
Description	Rabbit polyclonal antibody to OXSM
Specificity	Recognizes endogenous levels of OXSM protein
Antibody Type	Primary antibody
Immunogen	Recombinant fusion protein of human OXSM. The exact sequence is proprietary.
Purification	The antibody was purified by immunogen affinity chromatography.
Molecular Weight	Predicted: 40; Observed: 49 kD
Form/Buffer	Liquid in 0.42% Potassium phosphate, 0.87% Sodium chloride, pH 7.3, 30% glycerol, and 0.01% sodium azide.
Alternative Names	3-oxoacyl-[acyl-carrier-protein] synthase mitochondrial; Beta-ketoacyl-ACP synthase
Gene Symbol	OXSM
Entrez Gene	54995(Human); 71147(Mouse)
SwissProt	Q9NWU1(Human); Q9D404(Mouse)

*AREX continuously optimizes our products. Webpage content may not reflect the latest updates. For inquiries, please contact info@arexbio.com or your local distributor.

*Clone Number, Reactivity, Source/Host and Clonality can be found in the product name and Key Features section above.

DATASHEET**OXSM Rabbit Polyclonal Antibody**

CAT. NO. APA16391

DATA

Western blot analysis of OXSM expression in HepG2 (A), mouse kidney (B), rat lung (C) whole cell lysates. (Predicted band size: 40; 48 kD; Observed band size: 49 kD)

STORAGE

Store at 4°C short term. For long term storage, store at -20°C, avoiding freeze/thaw cycles.

NOTE

For Research Use Only. Not for diagnostic, therapeutics, prophylactic or in vivo use.