

DATASHEET

P2X3 Rabbit Polyclonal Antibody

CAT. NO. APA16392

KEY FEATURES

Target	P2X3	Source / Host	Rabbit
Reactivity	Human, Mouse, Rat	Clonality	Polyclonal
Applications	WB	Conjugation	Unconjugated
Form / Buffer	Liquid in 0.42% Potassium phosphate, 0.87% Sodium chloride, pH 7.3, 30% glycerol, and 0.01% sodium azide.		Storage at -20°C

BACKGROUND

Extracellular ATP-activated non-selective cation channel . Plays particularly important role in sensory neurons where its activation is critical for gustatory, nociceptive responses, visceral reflexes and sensory hypersensitization .

APPLICATION

To ensure optimal assay performance, AREX recommends conducting reagent titration tailored to each testing system for optimal detection results.

WB	1:500 - 1:2000
----	----------------

*Results are sample-specific. Please refer to your local assay conditions and test parameters for reference.

PRODUCT OVERVIEW

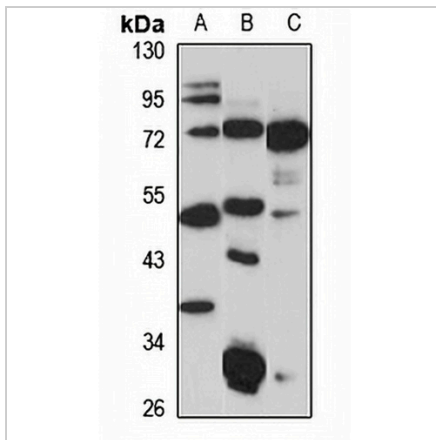
Description	Rabbit polyclonal antibody to P2X3
Specificity	Recognizes endogenous levels of P2X3 protein
Antibody Type	Primary antibody
Immunogen	Recombinant fusion protein of human P2X3. The exact sequence is proprietary.
Purification	The antibody was purified by immunogen affinity chromatography.
Molecular Weight	Predicted: 44 kD; Observed: 44 kD
Form/Buffer	Liquid in 0.42% Potassium phosphate, 0.87% Sodium chloride, pH 7.3, 30% glycerol, and 0.01% sodium azide.
Alternative Names	P2X purinoceptor 3; P2X3; ATP receptor; Purinergic receptor
Gene Symbol	P2RX3
Entrez Gene	5024(Human); 228139(Mouse); 81739(Rat)
SwissProt	P56373(Human); Q3UR32(Mouse); P49654(Rat)

*AREX continuously optimizes our products. Webpage content may not reflect the latest updates. For inquiries, please contact info@arexbio.com or your local distributor.

*Clone Number, Reactivity, Source/Host and Clonality can be found in the product name and Key Features section above.

DATASHEET**P2X3 Rabbit Polyclonal Antibody**

CAT. NO. APA16392

DATA

Western blot analysis of P2X3 expression in Jurkat (A), mouse heart (B), rat liver (C) whole cell lysates. (Predicted band size: 44 kD; Observed band size: 44 kD)

STORAGE

Store at 4°C short term. For long term storage, store at -20°C, avoiding freeze/thaw cycles.

NOTE

For Research Use Only. Not for diagnostic, therapeutics, prophylactic or in vivo use.