

DATASHEET

PADI2 Rabbit Polyclonal Antibody

CAT. NO. APA16401

KEY FEATURES

Target	PADI2	Source / Host	Rabbit
Reactivity	Human, Mouse, Rat	Clonality	Polyclonal
Applications	WB	Conjugation	Unconjugated
Form / Buffer	Liquid in 0.42% Potassium phosphate, 0.87% Sodium chloride, pH 7.3, 30% glycerol, and 0.01% sodium azide.		Storage at -20°C

BACKGROUND

Catalyzes the deimination of arginine residues of proteins.

APPLICATION

To ensure optimal assay performance, AREX recommends conducting reagent titration tailored to each testing system for optimal detection results.

WB	1:500 - 1:2000
----	----------------

*Results are sample-specific. Please refer to your local assay conditions and test parameters for reference.

PRODUCT OVERVIEW

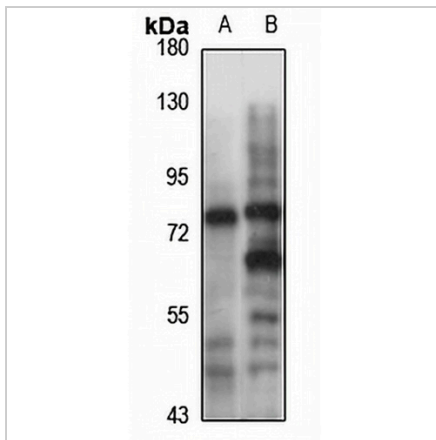
Description	Rabbit polyclonal antibody to PADI2
Specificity	Recognizes endogenous levels of PADI2 protein
Antibody Type	Primary antibody
Immunogen	Recombinant fusion protein of human PADI2. The exact sequence is proprietary.
Purification	The antibody was purified by immunogen affinity chromatography.
Molecular Weight	Predicted: 49; Observed: 75 kD
Form/Buffer	Liquid in 0.42% Potassium phosphate, 0.87% Sodium chloride, pH 7.3, 30% glycerol, and 0.01% sodium azide.
Alternative Names	KIAA0994; PDI2; Protein-arginine deiminase type-2; PAD-H19; Peptidylarginine deiminase II; Protein-arginine deiminase type II
Gene Symbol	PADI2
Entrez Gene	11240(Human); 18600(Mouse); 29511(Rat)
SwissProt	Q9Y2J8(Human); Q08642(Mouse); P20717(Rat)

*AREX continuously optimizes our products. Webpage content may not reflect the latest updates. For inquiries, please contact info@arexbio.com or your local distributor.

*Clone Number, Reactivity, Source/Host and Clonality can be found in the product name and Key Features section above.

DATASHEET**PADI2 Rabbit Polyclonal Antibody**

CAT. NO. APA16401

DATA

Western blot analysis of PADI2 expression in mouse spleen (A), rat brain (B) whole cell lysates. (Predicted band size: 49; 75 kD; Observed band size: 75 kD)

STORAGE

Store at 4°C short term. For long term storage, store at -20°C, avoiding freeze/thaw cycles.

NOTE

For Research Use Only. Not for diagnostic, therapeutics, prophylactic or in vivo use.