

**DATASHEET**

**PAFAH alpha Rabbit Polyclonal Antibody**

CAT. NO. APA16402

**KEY FEATURES**

Target	PAFAH alpha	Source / Host	Rabbit
Reactivity	Human, Mouse, Rat	Clonality	Polyclonal
Applications	WB	Conjugation	Unconjugated
Form / Buffer	Liquid in 0.42% Potassium phosphate, 0.87% Sodium chloride, pH 7.3, 30% glycerol, and 0.01% sodium azide.		Storage at -20°C

**BACKGROUND**

Regulatory subunit (beta subunit) of the cytosolic type I platelet-activating factor (PAF) acetylhydrolase (PAF-AH (I)), an enzyme that catalyzes the hydrolyze of the acetyl group at the sn-2 position of PAF and its analogs and participates in PAF inactivation. Regulates the PAF-AH (I) activity in a catalytic dimer composition-dependent manner . Required for proper activation of Rho GTPases and actin polymerization at the leading edge of locomoting cerebellar neurons and postmigratory hippocampal neurons in response to calcium influx triggered via NMDA receptors . Positively regulates the activity of the minus-end directed microtubule motor protein dynein. May enhance dynein-mediated microtubule sliding by targeting dynein to the microtubule plus end.

**APPLICATION**

To ensure optimal assay performance, AREX recommends conducting reagent titration tailored to each testing system for optimal detection results.

WB	1:500 - 1:2000
----	----------------

\*Results are sample-specific. Please refer to your local assay conditions and test parameters for reference.

**PRODUCT OVERVIEW**

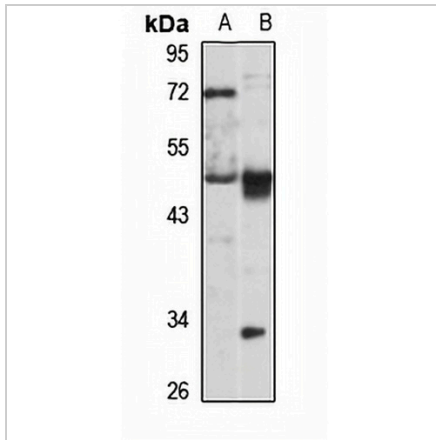
Description	Rabbit polyclonal antibody to PAFAH alpha
Specificity	Recognizes endogenous levels of PAFAH alpha protein
Antibody Type	Primary antibody
Immunogen	Recombinant fusion protein of human PAFAH alpha. The exact sequence is proprietary.
Purification	The antibody was purified by immunogen affinity chromatography.
Molecular Weight	Predicted: 16; Observed: 47 kD
Form/Buffer	Liquid in 0.42% Potassium phosphate, 0.87% Sodium chloride, pH 7.3, 30% glycerol, and 0.01% sodium azide.
Alternative Names	LIS1; MDCR; MDS; PAFAHA; Platelet-activating factor acetylhydrolase IB subunit alpha; Lissencephaly-1 protein; LIS-1; PAF acetylhydrolase 45 kDa subunit; PAF-AH 45 kDa subunit; PAF-AH alpha; PAFAH alpha
Gene Symbol	PAFAH1B1
Entrez Gene	5048(Human); 18472(Mouse); 83572(Rat)
SwissProt	P43034(Human); P63005(Mouse); P63004(Rat)

\*AREX continuously optimizes our products. Webpage content may not reflect the latest updates. For inquiries, please contact [info@arexbio.com](mailto:info@arexbio.com) or your local distributor.

\*Clone Number, Reactivity, Source/Host and Clonality can be found in the product name and Key Features section above.

**DATASHEET****PAFAH alpha Rabbit Polyclonal Antibody**

CAT. NO. APA16402

**DATA**

Western blot analysis of PAFAH alpha expression in HT29 (A), mouse brain (B) whole cell lysates. (Predicted band size: 16; 46 kD; Observed band size: 47 kD)

**STORAGE**

Store at 4°C short term. For long term storage, store at -20°C, avoiding freeze/thaw cycles.

**NOTE**

For Research Use Only. Not for diagnostic, therapeutics, prophylactic or in vivo use.