

DATASHEET

PAFAH1B3 Rabbit Polyclonal Antibody

CAT. NO. APA16404

KEY FEATURES

Target	PAFAH1B3	Source / Host	Rabbit
Reactivity	Human, Mouse, Rat	Clonality	Polyclonal
Applications	WB	Conjugation	Unconjugated
Form / Buffer	Liquid in 0.42% Potassium phosphate, 0.87% Sodium chloride, pH 7.3, 30% glycerol, and 0.01% sodium azide.		Storage at-20°C

BACKGROUND

Alpha1 catalytic subunit of the cytosolic type I platelet-activating factor (PAF) acetylhydrolase (PAF-AH (I)) heterotetrameric enzyme that catalyzes the hydrolyze of the acetyl group at the sn-2 position of PAF and its analogs and modulates the action of PAF. The activity and substrate specificity of PAF-AH (I) are affected by its subunit composition. Both alpha1/alpha1 homodimer (PAFAH1B3/PAFAH1B3 homodimer) and alpha1/alpha2 heterodimer(PAFAH1B3/PAFAH1B2 heterodimer) hydrolyze 1-O-alkyl-2-acetyl-sn-glycero-3-phosphoric acid (AAGPA) more efficiently than PAF, but they have little hydrolytic activity towards 1-O-alkyl-2-acetyl-sn-glycero-3-phosphorylethanolamine (AAGPE). Plays an important role during the development of brain.

APPLICATION

To ensure optimal assay performance, AREX recommends conducting reagent titration tailored to each testing system for optimal detection results.

WB	1:500 - 1:2000
----	----------------

*Results are sample-specific. Please refer to your local assay conditions and test parameters for reference.

PRODUCT OVERVIEW

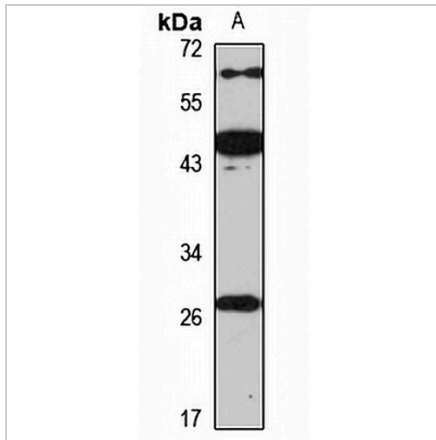
Description	Rabbit polyclonal antibody to PAFAH1B3
Specificity	Recognizes endogenous levels of PAFAH1B3 protein
Antibody Type	Primary antibody
Immunogen	Recombinant fusion protein of human PAFAH1B3. The exact sequence is proprietary.
Purification	The antibody was purified by immunogen affinity chromatography.
Molecular Weight	Predicted: 25 kD; Observed: 25 kD
Form/Buffer	Liquid in 0.42% Potassium phosphate, 0.87% Sodium chloride, pH 7.3, 30% glycerol, and 0.01% sodium azide.
Alternative Names	PAFAHG; Platelet-activating factor acetylhydrolase IB subunit gamma; PAF acetylhydrolase 29 kDa subunit; PAF-AH 29 kDa subunit; PAF-AH subunit gamma; PAFAH subunit gamma
Gene Symbol	PAFAH1B3
Entrez Gene	5050(Human); 18476(Mouse); 114113(Rat)
SwissProt	Q15102(Human); Q61205(Mouse); O35263(Rat)

*AREX continuously optimizes our products. Webpage content may not reflect the latest updates. For inquiries, please contact info@arexbio.com or your local distributor.

*Clone Number, Reactivity, Source/Host and Clonality can be found in the product name and Key Features section above.

DATASHEET**PAFAH1B3 Rabbit Polyclonal Antibody**

CAT. NO. APA16404

DATA

Western blot analysis of PAFAH1B3 expression in HeLa (A) whole cell lysates. (Predicted band size: 25 kD; Observed band size: 25 kD)

STORAGE

Store at 4°C short term. For long term storage, store at -20°C, avoiding freeze/thaw cycles.

NOTE

For Research Use Only. Not for diagnostic, therapeutics, prophylactic or in vivo use.