

**DATASHEET**

**PAFAH2 Rabbit Polyclonal Antibody**

CAT. NO. APA16405

**KEY FEATURES**

Target	PAFAH2	Source / Host	Rabbit
Reactivity	Human, Mouse, Rat	Clonality	Polyclonal
Applications	WB	Conjugation	Unconjugated
Form / Buffer	Liquid in 0.42% Potassium phosphate, 0.87% Sodium chloride, pH 7.3, 30% glycerol, and 0.01% sodium azide.		Storage at -20°C

**BACKGROUND**

Catalyzes the hydrolyze of the acetyl group at the sn-2 position of platelet-activating factor (PAF) and its analogs, leading to their inactivation and its analogs, leading to their inactivation . Hydrolyzes propionyl and butyroyl moieties approximately half as effectively as PAF . Also catalyzes transacetylation of the acetyl group from platelet-activating factor (PAF) to lysoplasmalogen and to sphingosine, producing plasmalogen analogs of PAF and N-acetylsphingosine (C2-ceramide) respectively. Has a marked selectivity for phospholipids with short acyl chains at the sn-2 position .

**APPLICATION**

To ensure optimal assay performance, AREX recommends conducting reagent titration tailored to each testing system for optimal detection results.

WB	1:500 - 1:2000
----	----------------

\*Results are sample-specific. Please refer to your local assay conditions and test parameters for reference.

**PRODUCT OVERVIEW**

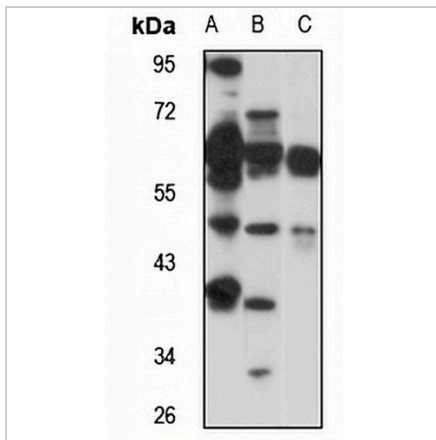
Description	Rabbit polyclonal antibody to PAFAH2
Specificity	Recognizes endogenous levels of PAFAH2 protein
Antibody Type	Primary antibody
Immunogen	Recombinant fusion protein of human PAFAH2. The exact sequence is proprietary.
Purification	The antibody was purified by immunogen affinity chromatography.
Molecular Weight	Predicted: 44 kD; Observed: 44 kD
Form/Buffer	Liquid in 0.42% Potassium phosphate, 0.87% Sodium chloride, pH 7.3, 30% glycerol, and 0.01% sodium azide.
Alternative Names	Platelet-activating factor acetylhydrolase 2 cytoplasmic; Serine-dependent phospholipase A2; SD-PLA2; hSD-PLA2
Gene Symbol	PAFAH2
Entrez Gene	5051(Human); 100163(Mouse); 313611(Rat)
SwissProt	Q99487(Human); Q8VDG7(Mouse); P83006(Rat)

\*AREX continuously optimizes our products. Webpage content may not reflect the latest updates. For inquiries, please contact [info@arexbio.com](mailto:info@arexbio.com) or your local distributor.

\*Clone Number, Reactivity, Source/Host and Clonality can be found in the product name and Key Features section above.

**DATASHEET****PAFAH2 Rabbit Polyclonal Antibody**

CAT. NO. APA16405

**DATA**

Western blot analysis of PAFAH2 expression in Jurkat (A), mouse liver (B), rat liver (C) whole cell lysates. (Predicted band size: 44 kD; Observed band size: 44 kD)

**STORAGE**

Store at 4°C short term. For long term storage, store at -20°C, avoiding freeze/thaw cycles.

**NOTE**

For Research Use Only. Not for diagnostic, therapeutics, prophylactic or in vivo use.