

**DATASHEET**

**PALD1 Rabbit Polyclonal Antibody**

CAT. NO. APA16408

**KEY FEATURES**

Target	PALD1	Source / Host	Rabbit
Reactivity	Human, Mouse, Rat	Clonality	Polyclonal
Applications	WB, IF/ICC	Conjugation	Unconjugated
Form / Buffer	Liquid in 0.42% Potassium phosphate, 0.87% Sodium chloride, pH 7.3, 30% glycerol, and 0.01% sodium azide.		Storage at -20°C

**BACKGROUND**

Paladin (PALD1). Belongs to the paladin family Subcellular location: Cytoplasm, cytosol Tissue specificity: Expressed in endothelial cells, and in certain larger vessels, in mural cells. In the brain, possibly expressed in microglia. Expressed in peripheral blood mononuclear cells (at protein level)

**APPLICATION**

To ensure optimal assay performance, AREX recommends conducting reagent titration tailored to each testing system for optimal detection results.

WB	1:500 - 1:2000
IF/ICC	1:50 - 1:200

\*Results are sample-specific. Please refer to your local assay conditions and test parameters for reference.

**PRODUCT OVERVIEW**

Description	Rabbit polyclonal antibody to PALD1
Specificity	Recognizes endogenous levels of PALD1 protein
Antibody Type	Primary antibody
Immunogen	Recombinant fusion protein of human PALD1. The exact sequence is proprietary.
Purification	The antibody was purified by immunogen affinity chromatography.
Molecular Weight	Predicted: 96 kD; Observed: 97 kD
Form/Buffer	Liquid in 0.42% Potassium phosphate, 0.87% Sodium chloride, pH 7.3, 30% glycerol, and 0.01% sodium azide.
Alternative Names	KIAA1274; PALD; Paladin
Gene Symbol	PALD1
Entrez Gene	27143(Human); 27355(Mouse)
SwissProt	Q9ULE6(Human); P70261(Mouse)

\*AREX continuously optimizes our products. Webpage content may not reflect the latest updates. For inquiries, please contact [info@arexbio.com](mailto:info@arexbio.com) or your local distributor.

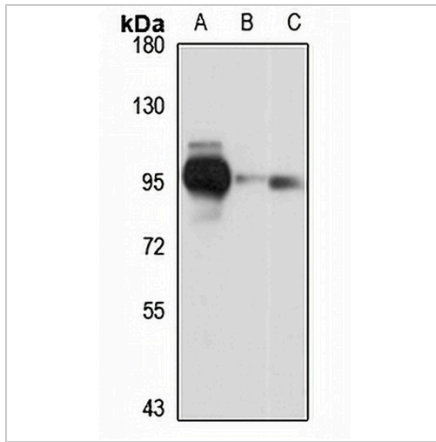
\*Clone Number, Reactivity, Source/Host and Clonality can be found in the product name and Key Features section above.

**DATASHEET**

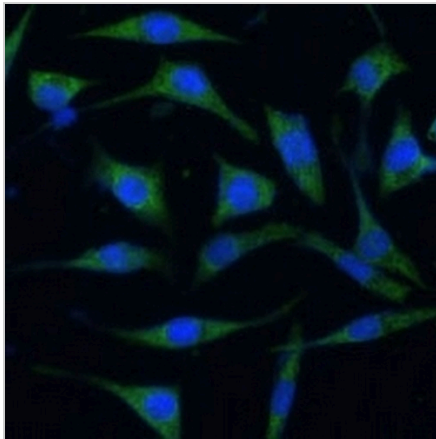
**PALD1 Rabbit Polyclonal Antibody**

CAT. NO. APA16408

**DATA**



Western blot analysis of PALD1 expression in mouse heart (A), mouse liver (B), rat kidney (C) whole cell lysates. (Predicted band size: 96 kD; Observed band size: 97 kD)



Immunofluorescent analysis of PALD1 staining in L929 cells. Formalin-fixed cells were permeabilized with 0.1% Triton X-100 in TBS for 5-10 minutes and blocked with 3% BSA-PBS for 30 minutes at room temperature. Cells were probed with the primary antibody in 3% BSA-PBS and incubated overnight at 4 °C in a humidified chamber. Cells were washed with PBST and incubated with a Alexa Fluor 488-conjugated secondary antibody (green) in PBS at room temperature in the dark.

**STORAGE**

Store at 4°C short term. For long term storage, store at -20°C, avoiding freeze/thaw cycles.

**NOTE**

For Research Use Only. Not for diagnostic, therapeutics, prophylactic or in vivo use.