

**DATASHEET**

**Magmas Rabbit Polyclonal Antibody**

CAT. NO. APA16409

**KEY FEATURES**

Target	Magmas	Source / Host	Rabbit
Reactivity	Human, Mouse, Rat	Clonality	Polyclonal
Applications	WB	Conjugation	Unconjugated
Form / Buffer	Liquid in 0.42% Potassium phosphate, 0.87% Sodium chloride, pH 7.3, 30% glycerol, and 0.01% sodium azide.		Storage at-20°C

**BACKGROUND**

Regulates ATP-dependent protein translocation into the mitochondrial matrix. Inhibits DNAJC19 stimulation of HSPA9/Mortalin ATPase activity.

**APPLICATION**

To ensure optimal assay performance, AREX recommends conducting reagent titration tailored to each testing system for optimal detection results.

WB	1:500 - 1:2000
----	----------------

\*Results are sample-specific. Please refer to your local assay conditions and test parameters for reference.

**PRODUCT OVERVIEW**

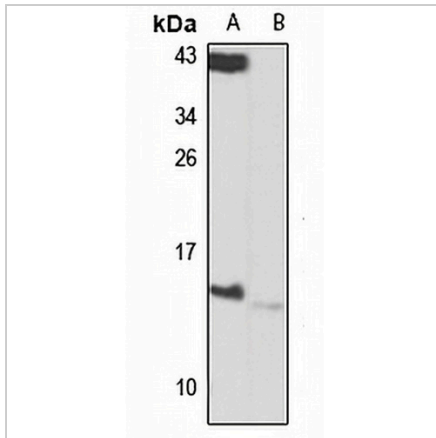
Description	Rabbit polyclonal antibody to Magmas
Specificity	Recognizes endogenous levels of Magmas protein
Antibody Type	Primary antibody
Immunogen	Recombinant fusion protein of human Magmas. The exact sequence is proprietary.
Purification	The antibody was purified by immunogen affinity chromatography.
Molecular Weight	Predicted: 13 kD; Observed: 14 kD
Form/Buffer	Liquid in 0.42% Potassium phosphate, 0.87% Sodium chloride, pH 7.3, 30% glycerol, and 0.01% sodium azide.
Alternative Names	MAGMAS; TIM16; TIMM16; Mitochondrial import inner membrane translocase subunit TIM16; Mitochondria-associated granulocyte macrophage CSF-signaling molecule; Presequence translocated-associated motor subunit PAM16
Gene Symbol	PAM16
Entrez Gene	51025(Human); 66449(Mouse)
SwissProt	Q9Y3D7(Human); Q9CQV1(Mouse); Q6EIX2(Rat)

\*AREX continuously optimizes our products. Webpage content may not reflect the latest updates. For inquiries, please contact [info@arexbio.com](mailto:info@arexbio.com) or your local distributor.

\*Clone Number, Reactivity, Source/Host and Clonality can be found in the product name and Key Features section above.

**DATASHEET****Magmas Rabbit Polyclonal Antibody**

CAT. NO. APA16409

**DATA**

Western blot analysis of Magmas expression in Jurkat (A), mouse testis (B) whole cell lysates. (Predicted band size: 13 kD; Observed band size: 14 kD)

**STORAGE**

Store at 4°C short term. For long term storage, store at -20°C, avoiding freeze/thaw cycles.

**NOTE**

For Research Use Only. Not for diagnostic, therapeutics, prophylactic or in vivo use.