

DATASHEET

PAN2 Rabbit Polyclonal Antibody

CAT. NO. APA16410

KEY FEATURES

Target	PAN2	Source / Host	Rabbit
Reactivity	Human, Mouse, Rat	Clonality	Polyclonal
Applications	WB	Conjugation	Unconjugated
Form / Buffer	Liquid in 0.42% Potassium phosphate, 0.87% Sodium chloride, pH 7.3, 30% glycerol, and 0.01% sodium azide.		Storage at -20°C

BACKGROUND

Catalytic subunit of the poly(A)-nuclease (PAN) deadenylation complex, one of two cytoplasmic mRNA deadenylases involved in general and miRNA-mediated mRNA turnover. PAN specifically shortens poly(A) tails of RNA and the activity is stimulated by poly(A)-binding protein (PABP). PAN deadenylation is followed by rapid degradation of the shortened mRNA tails by the CCR4-NOT complex. Deadenylated mRNAs are then degraded by two alternative mechanisms, namely exosome-mediated 3'-5' exonucleolytic degradation, or deadenylation-dependent mRNA decapping and subsequent 5'-3' exonucleolytic degradation by XRN1. Also acts as an important regulator of the HIF1A-mediated hypoxic response. Required for HIF1A mRNA stability independent of poly(A) tail length regulation.

APPLICATION

To ensure optimal assay performance, AREX recommends conducting reagent titration tailored to each testing system for optimal detection results.

WB	1:500 - 1:2000
----	----------------

*Results are sample-specific. Please refer to your local assay conditions and test parameters for reference.

PRODUCT OVERVIEW

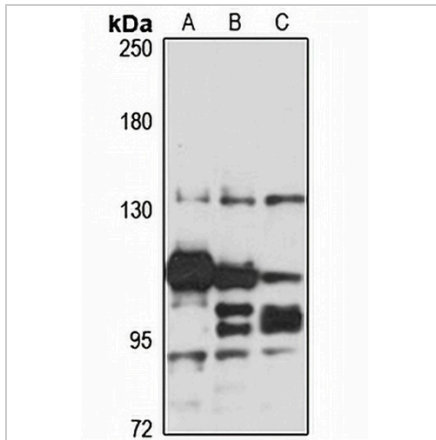
Description	Rabbit polyclonal antibody to PAN2
Specificity	Recognizes endogenous levels of PAN2 protein
Antibody Type	Primary antibody
Immunogen	Recombinant fusion protein of human PAN2. The exact sequence is proprietary.
Purification	The antibody was purified by immunogen affinity chromatography.
Molecular Weight	Predicted: 135 kD; Observed: 135 kD
Form/Buffer	Liquid in 0.42% Potassium phosphate, 0.87% Sodium chloride, pH 7.3, 30% glycerol, and 0.01% sodium azide.
Alternative Names	KIAA0710; USP52; PAB-dependent poly(A)-specific ribonuclease subunit PAN2; hPan2; Inactive ubiquitin carboxyl-terminal hydrolase 52; PAB1P-dependent poly(A)-nuclease; PAN deadenylation complex catalytic subunit 2
Gene Symbol	PAN2
Entrez Gene	9924(Human); 103135(Mouse); 408200(Rat)
SwissProt	Q504Q3(Human); Q8BGF7(Mouse); Q6IE70(Rat)

*AREX continuously optimizes our products. Webpage content may not reflect the latest updates. For inquiries, please contact info@arexbio.com or your local distributor.

*Clone Number, Reactivity, Source/Host and Clonality can be found in the product name and Key Features section above.

DATASHEET**PAN2 Rabbit Polyclonal Antibody**

CAT. NO. APA16410

DATA

Western blot analysis of PAN2 expression in HeLa (A), NIH3T3 (B), mouse thymus (C) whole cell lysates. (Predicted band size: 135 kD; Observed band size: 135 kD)

STORAGE

Store at 4°C short term. For long term storage, store at -20°C, avoiding freeze/thaw cycles.

NOTE

For Research Use Only. Not for diagnostic, therapeutics, prophylactic or in vivo use.