

DATASHEET

Pannexin-2 Rabbit Polyclonal Antibody

CAT. NO. APA16411

KEY FEATURES

Target	Pannexin-2	Source / Host	Rabbit
Reactivity	Human	Clonality	Polyclonal
Applications	WB	Conjugation	Unconjugated
Form / Buffer	Liquid in 0.42% Potassium phosphate, 0.87% Sodium chloride, pH 7.3, 30% glycerol, and 0.01% sodium azide.		Storage at -20°C

BACKGROUND

Ion channel with a slight anion preference . Also able to release ATP . Plays a role in regulating neurogenesis and apoptosis in keratinocytes .

APPLICATION

To ensure optimal assay performance, AREX recommends conducting reagent titration tailored to each testing system for optimal detection results.

WB	1:500 - 1:1000
----	----------------

*Results are sample-specific. Please refer to your local assay conditions and test parameters for reference.

PRODUCT OVERVIEW

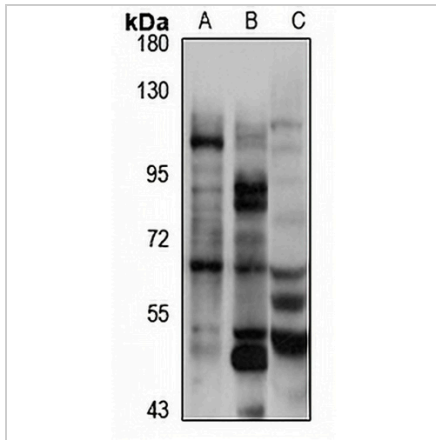
Description	Rabbit polyclonal antibody to Pannexin-2
Specificity	Recognizes endogenous levels of Pannexin-2 protein
Antibody Type	Primary antibody
Immunogen	Recombinant fusion protein of human Pannexin-2. The exact sequence is proprietary.
Purification	The antibody was purified by immunogen affinity chromatography.
Molecular Weight	Predicted: 55; Observed: 65 kD
Form/Buffer	Liquid in 0.42% Potassium phosphate, 0.87% Sodium chloride, pH 7.3, 30% glycerol, and 0.01% sodium azide.
Alternative Names	Pannexin-2
Gene Symbol	PANX2
Entrez Gene	56666(Human); 406218(Mouse); 362979(Rat)
SwissProt	Q96RD6(Human); Q6IMP4(Mouse); P60571(Rat)

*AREX continuously optimizes our products. Webpage content may not reflect the latest updates. For inquiries, please contact info@arexbio.com or your local distributor.

*Clone Number, Reactivity, Source/Host and Clonality can be found in the product name and Key Features section above.

DATASHEET**Pannexin-2 Rabbit Polyclonal Antibody**

CAT. NO. APA16411

DATA

Western blot analysis of Pannexin-2 expression in HepG2 (A), mouse brain (B), rat kidney (C) whole cell lysates. (Predicted band size: 55; 70; 74 kD; Observed band size: 65 kD)

STORAGE

Store at 4°C short term. For long term storage, store at -20°C, avoiding freeze/thaw cycles.

NOTE

For Research Use Only. Not for diagnostic, therapeutics, prophylactic or in vivo use.