

DATASHEET

PAPD4 Rabbit Polyclonal Antibody

CAT. NO. APA16412

KEY FEATURES

Target	PAPD4	Source / Host	Rabbit
Reactivity	Human, Mouse, Rat	Clonality	Polyclonal
Applications	WB	Conjugation	Unconjugated
Form / Buffer	Liquid in 0.42% Potassium phosphate, 0.87% Sodium chloride, pH 7.3, 30% glycerol, and 0.01% sodium azide.		Storage at -20°C

BACKGROUND

Cytoplasmic poly(A) RNA polymerase that adds successive AMP monomers to the 3'-end of specific RNAs, forming a poly(A) tail . In contrast to the canonical nuclear poly(A) RNA polymerase, it only adds poly(A) to selected cytoplasmic mRNAs . Does not play a role in replication-dependent histone mRNA degradation . Adds a single nucleotide to the 3' end of specific miRNAs, monoadenylation stabilizes and prolongs the activity of some but not all miRNAs .

APPLICATION

To ensure optimal assay performance, AREX recommends conducting reagent titration tailored to each testing system for optimal detection results.

WB	1:500 - 1:2000
----	----------------

*Results are sample-specific. Please refer to your local assay conditions and test parameters for reference.

PRODUCT OVERVIEW

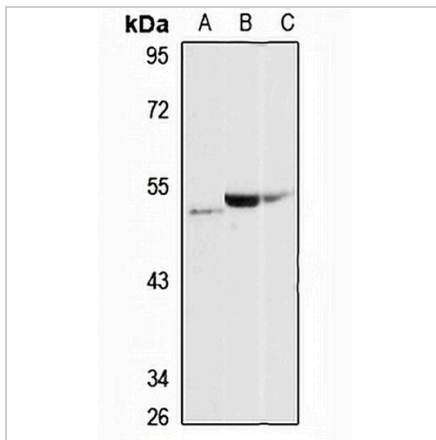
Description	Rabbit polyclonal antibody to PAPD4
Specificity	Recognizes endogenous levels of PAPD4 protein
Antibody Type	Primary antibody
Immunogen	Recombinant fusion protein of human PAPD4. The exact sequence is proprietary.
Purification	The antibody was purified by immunogen affinity chromatography.
Molecular Weight	Predicted: 55; Observed: 54 kD
Form/Buffer	Liquid in 0.42% Potassium phosphate, 0.87% Sodium chloride, pH 7.3, 30% glycerol, and 0.01% sodium azide.
Alternative Names	GLD2; Poly(A) RNA polymerase GLD2; hGLD-2; PAP-associated domain-containing protein 4; Terminal uridylyltransferase 2; TUTase 2
Gene Symbol	PAPD4
Entrez Gene	167153(Human); 100715(Mouse); 361878(Rat)
SwissProt	Q6PIY7(Human); Q91YI6(Mouse); Q5U315(Rat)

*AREX continuously optimizes our products. Webpage content may not reflect the latest updates. For inquiries, please contact info@arexbio.com or your local distributor.

*Clone Number, Reactivity, Source/Host and Clonality can be found in the product name and Key Features section above.

DATASHEET**PAPD4 Rabbit Polyclonal Antibody**

CAT. NO. APA16412

DATA

Western blot analysis of PAPD4 expression in BxPC3 (A), mouse heart (B), rat heart (C) whole cell lysates. (Predicted band size: 55; 56 kD; Observed band size: 54 kD)

STORAGE

Store at 4°C short term. For long term storage, store at -20°C, avoiding freeze/thaw cycles.

NOTE

For Research Use Only. Not for diagnostic, therapeutics, prophylactic or in vivo use.