

DATASHEET

PAPD5 Rabbit Polyclonal Antibody

CAT. NO. APA16413

KEY FEATURES

| | | | |
|---------------|---|---------------|---------------------|
| Target | PAPD5 | Source / Host | Rabbit |
| Reactivity | Human, Mouse, Rat | Clonality | Polyclonal |
| Applications | WB | Conjugation | Unconjugated |
| Form / Buffer | Liquid in 0.42% Potassium phosphate, 0.87% Sodium chloride, pH 7.3, 30% glycerol, and 0.01% sodium azide. | | Storage at -20°C |

BACKGROUND

Terminal nucleotidyltransferase that catalyzes preferentially the transfer of ATP and GTP on RNA 3' poly(A) tail creating a heterogeneous 3' poly(A) tail leading to mRNAs stabilization by protecting mRNAs from active deadenylation tail creating a heterogeneous 3' poly(A) tail leading to mRNAs stabilization by protecting mRNAs from active deadenylation . Also functions as a catalytic subunit of a TRAMP-like complex which has a poly(A) RNA polymerase activity and is involved in a post-transcriptional quality control mechanism. Polyadenylation with short oligo(A) tails is required for the degradative activity of the exosome on several of its nuclear RNA substrates. Doesn't need a cofactor for polyadenylation activity (in vitro) .

APPLICATION

To ensure optimal assay performance, AREX recommends conducting reagent titration tailored to each testing system for optimal detection results.

| | |
|----|----------------|
| WB | 1:500 - 1:2000 |
|----|----------------|

*Results are sample-specific. Please refer to your local assay conditions and test parameters for reference.

PRODUCT OVERVIEW

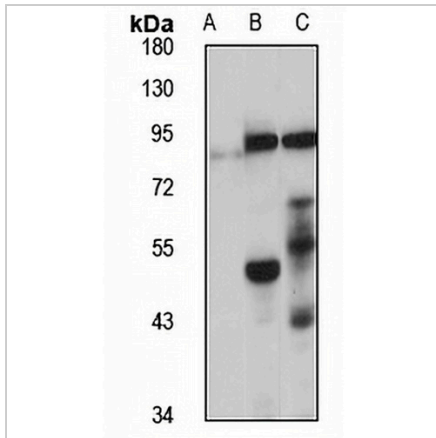
| | |
|-------------------|--|
| Description | Rabbit polyclonal antibody to PAPD5 |
| Specificity | Recognizes endogenous levels of PAPD5 protein |
| Antibody Type | Primary antibody |
| Immunogen | Recombinant fusion protein of human PAPD5. The exact sequence is proprietary. |
| Purification | The antibody was purified by immunogen affinity chromatography. |
| Molecular Weight | Predicted: 41; Observed: 90 kD |
| Form/Buffer | Liquid in 0.42% Potassium phosphate, 0.87% Sodium chloride, pH 7.3, 30% glycerol, and 0.01% sodium azide. |
| Alternative Names | Non-canonical poly(A) RNA polymerase PAPD5; PAP-associated domain-containing protein 5; Terminal uridylyltransferase 3; TUTase 3; Topoisomerase-related function protein 4-2; TRF4-2 |
| Gene Symbol | PAPD5 |
| Entrez Gene | 64282(Human); 214627(Mouse) |
| SwissProt | Q8NDF8(Human); Q68ED3(Mouse) |

*AREX continuously optimizes our products. Webpage content may not reflect the latest updates. For inquiries, please contact info@arexbio.com or your local distributor.

*Clone Number, Reactivity, Source/Host and Clonality can be found in the product name and Key Features section above.

DATASHEET**PAPD5 Rabbit Polyclonal Antibody**

CAT. NO. APA16413

DATA

Western blot analysis of PAPD5 expression in HeLa (A), mouse liver (B), rat thymus (C) whole cell lysates. (Predicted band size: 41; 51; 63; 64; 75 kD; Observed band size: 90 kD)

STORAGE

Store at 4°C short term. For long term storage, store at -20°C, avoiding freeze/thaw cycles.

NOTE

For Research Use Only. Not for diagnostic, therapeutics, prophylactic or in vivo use.