

**DATASHEET**

**PAR-6 beta Rabbit Polyclonal Antibody**

CAT. NO. APA16415

**KEY FEATURES**

Target	PAR-6 beta	Source / Host	Rabbit
Reactivity	Human, Mouse	Clonality	Polyclonal
Applications	WB	Conjugation	Unconjugated
Form / Buffer	Liquid in 0.42% Potassium phosphate, 0.87% Sodium chloride, pH 7.3, 30% glycerol, and 0.01% sodium azide.		Storage at -20°C

**BACKGROUND**

Adapter protein involved in asymmetrical cell division and cell polarization processes. Probably involved in formation of epithelial tight junctions. Association with PARD3 may prevent the interaction of PARD3 with F11R/JAM1, thereby preventing tight junction assembly. The PARD6-PARD3 complex links GTP-bound Rho small GTPases to atypical protein kinase C proteins.

**APPLICATION**

To ensure optimal assay performance, AREX recommends conducting reagent titration tailored to each testing system for optimal detection results.

WB	1:500 - 1:2000
----	----------------

\*Results are sample-specific. Please refer to your local assay conditions and test parameters for reference.

**PRODUCT OVERVIEW**

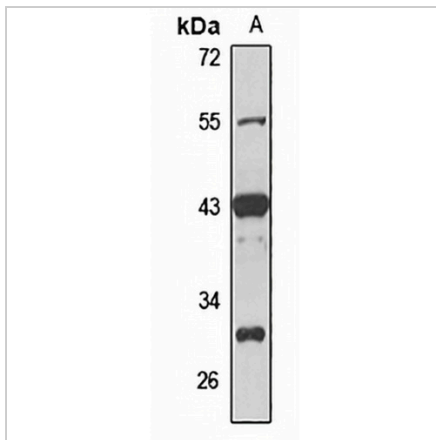
Description	Rabbit polyclonal antibody to PAR-6 beta
Specificity	Recognizes endogenous levels of PAR-6 beta protein
Antibody Type	Primary antibody
Immunogen	Recombinant fusion protein of human PAR-6 beta. The exact sequence is proprietary.
Purification	The antibody was purified by immunogen affinity chromatography.
Molecular Weight	Predicted: 12; Observed: 41 kD
Form/Buffer	Liquid in 0.42% Potassium phosphate, 0.87% Sodium chloride, pH 7.3, 30% glycerol, and 0.01% sodium azide.
Alternative Names	PAR6B; Partitioning defective 6 homolog beta; PAR-6 beta; PAR-6B
Gene Symbol	PAR6B
Entrez Gene	84612(Human); 58220(Mouse)
SwissProt	Q9BYG5(Human); Q9JK83(Mouse)

\*AREX continuously optimizes our products. Webpage content may not reflect the latest updates. For inquiries, please contact [info@arexbio.com](mailto:info@arexbio.com) or your local distributor.

\*Clone Number, Reactivity, Source/Host and Clonality can be found in the product name and Key Features section above.

**DATASHEET****PAR-6 beta Rabbit Polyclonal Antibody**

CAT. NO. APA16415

**DATA**

Western blot analysis of PAR-6 beta expression in MCF7 (A) whole cell lysates. (Predicted band size: 12; 41 kD; Observed band size: 41 kD)

**STORAGE**

Store at 4°C short term. For long term storage, store at -20°C, avoiding freeze/thaw cycles.

**NOTE**

For Research Use Only. Not for diagnostic, therapeutics, prophylactic or in vivo use.