

DATASHEET

PARP10 Rabbit Polyclonal Antibody

CAT. NO. APA16416

KEY FEATURES

Target	PARP10	Source / Host	Rabbit
Reactivity	Human, Mouse, Rat	Clonality	Polyclonal
Applications	WB	Conjugation	Unconjugated
Form / Buffer	Liquid in 0.42% Potassium phosphate, 0.87% Sodium chloride, pH 7.3, 30% glycerol, and 0.01% sodium azide.		Storage at -20°C

BACKGROUND

ADP-ribosyltransferase that mediates mono-ADP-ribosylation of glutamate and aspartate residues on target proteins . In contrast to PARP1 and PARP2, it is not able to mediate poly-ADP-ribosylation . Catalyzes mono-ADP-ribosylation of GSK3B, leading to negatively regulate GSK3B kinase activity . Involved in translesion DNA synthesis in response to DNA damage via its interaction with PCNA .

APPLICATION

To ensure optimal assay performance, AREX recommends conducting reagent titration tailored to each testing system for optimal detection results.

WB	1:500 - 1:2000
----	----------------

*Results are sample-specific. Please refer to your local assay conditions and test parameters for reference.

PRODUCT OVERVIEW

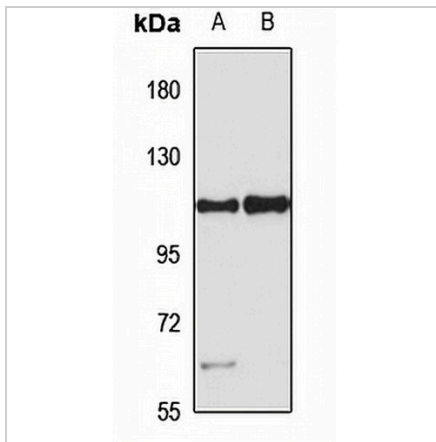
Description	Rabbit polyclonal antibody to PARP10
Specificity	Recognizes endogenous levels of PARP10 protein
Antibody Type	Primary antibody
Immunogen	Recombinant fusion protein of human PARP10. The exact sequence is proprietary.
Purification	The antibody was purified by immunogen affinity chromatography.
Molecular Weight	Predicted: 109 kD; Observed: 110 kD
Form/Buffer	Liquid in 0.42% Potassium phosphate, 0.87% Sodium chloride, pH 7.3, 30% glycerol, and 0.01% sodium azide.
Alternative Names	Poly [ADP-ribose] polymerase 10; PARP-10; ADP-ribosyltransferase diphtheria toxin-like 10; ARTD10
Gene Symbol	PARP10
Entrez Gene	84875(Human)
SwissProt	Q53GL7(Human)

*AREX continuously optimizes our products. Webpage content may not reflect the latest updates. For inquiries, please contact info@arexbio.com or your local distributor.

*Clone Number, Reactivity, Source/Host and Clonality can be found in the product name and Key Features section above.

DATASHEET**PARP10 Rabbit Polyclonal Antibody**

CAT. NO. APA16416

DATA

Western blot analysis of PARP10 expression in HT29 (A), MCF7 (B) whole cell lysates. (Predicted band size: 109 kD; Observed band size: 110 kD)

STORAGE

Store at 4°C short term. For long term storage, store at -20°C, avoiding freeze/thaw cycles.

NOTE

For Research Use Only. Not for diagnostic, therapeutics, prophylactic or in vivo use.