

DATASHEET

PARP12 Rabbit Polyclonal Antibody

CAT. NO. APA16417

KEY FEATURES

| | | | |
|---------------|---|---------------|--------------------|
| Target | PARP12 | Source / Host | Rabbit |
| Reactivity | Human, Mouse, Rat | Clonality | Polyclonal |
| Applications | WB | Conjugation | Unconjugated |
| Form / Buffer | Liquid in 0.42% Potassium phosphate, 0.87% Sodium chloride, pH 7.3, 30% glycerol, and 0.01% sodium azide. | | Storage at-20°C |

BACKGROUND

Mono-ADP-ribosyltransferase that mediates mono-ADP-ribosylation of target proteins . Acts as an antiviral factor by cooperating with PARP11 to suppress Zika virus replication . Displays anti-alphavirus activity during IFN-gamma immune activation by directly ADP-ribosylating the alphaviral non-structural proteins nsP3 and nsP4 . Acts as a component of the PRKD1-driven regulatory cascade that selectively controls a major branch of the basolateral transport pathway by catalyzing the MARYlation of GOLGA1 . Acts also as a key regulator of mitochondrial function, protein translation, and inflammation. Inhibits PINK1/Parkin-dependent mitophagy and promotes cartilage degeneration by inhibiting the ubiquitination and SUMOylation of MFN1/2 by upregulating ISG15 and ISGylation .

APPLICATION

To ensure optimal assay performance, AREX recommends conducting reagent titration tailored to each testing system for optimal detection results.

| | |
|----|----------------|
| WB | 1:500 - 1:2000 |
|----|----------------|

*Results are sample-specific. Please refer to your local assay conditions and test parameters for reference.

PRODUCT OVERVIEW

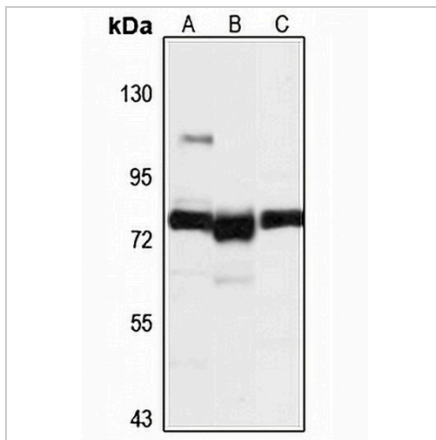
| | |
|-------------------|--|
| Description | Rabbit polyclonal antibody to PARP12 |
| Specificity | Recognizes endogenous levels of PARP12 protein |
| Antibody Type | Primary antibody |
| Immunogen | Recombinant fusion protein of human PARP12. The exact sequence is proprietary. |
| Purification | The antibody was purified by immunogen affinity chromatography. |
| Molecular Weight | Predicted: 79 kD; Observed: 79 kD |
| Form/Buffer | Liquid in 0.42% Potassium phosphate, 0.87% Sodium chloride, pH 7.3, 30% glycerol, and 0.01% sodium azide. |
| Alternative Names | ZC3HDC1; Poly [ADP-ribose] polymerase 12; PARP-12; ADP-ribosyltransferase diphtheria toxin-like 12; ARTD12; Zinc finger CCCH domain-containing protein 1 |
| Gene Symbol | PARP12 |
| Entrez Gene | 64761(Human); 243771(Mouse) |
| SwissProt | Q9H0J9(Human); Q8BZ20(Mouse) |

*AREX continuously optimizes our products. Webpage content may not reflect the latest updates. For inquiries, please contact info@arexbio.com or your local distributor.

*Clone Number, Reactivity, Source/Host and Clonality can be found in the product name and Key Features section above.

DATASHEET**PARP12 Rabbit Polyclonal Antibody**

CAT. NO. APA16417

DATA

Western blot analysis of PARP12 expression in HeLa (A), mouse liver (B), rat brain (C) whole cell lysates. (Predicted band size: 79 kD; Observed band size: 79 kD)

STORAGE

Store at 4°C short term. For long term storage, store at -20°C, avoiding freeze/thaw cycles.

NOTE

For Research Use Only. Not for diagnostic, therapeutics, prophylactic or in vivo use.